



## Pages Walk, SE1

### £310,000

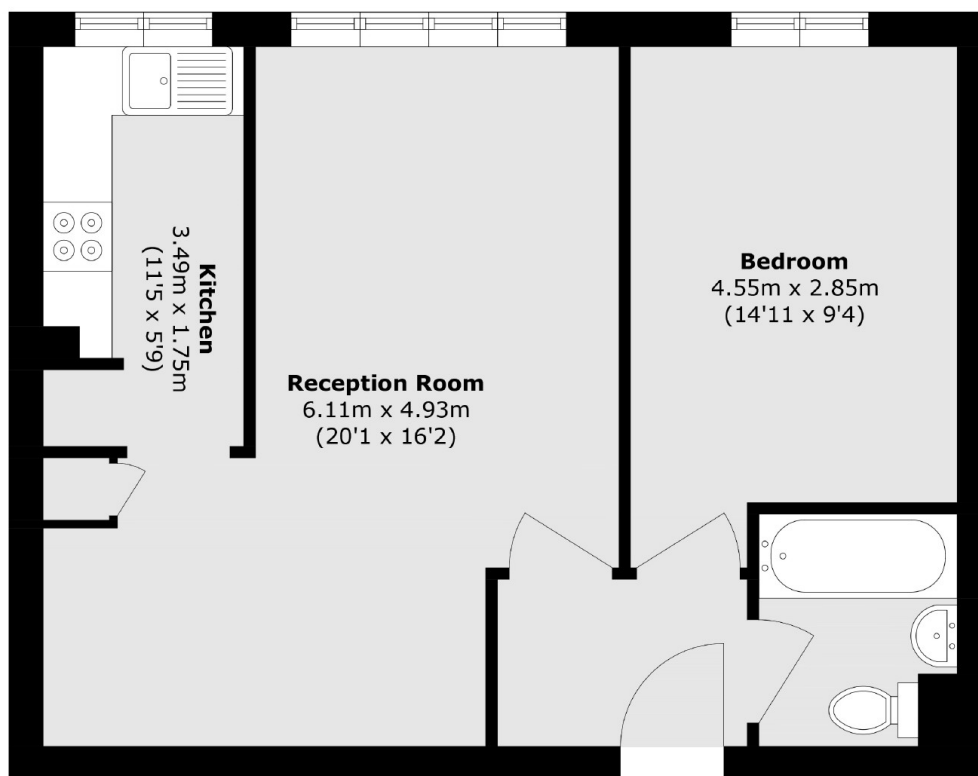
A highly attractive and refurbished ground floor flat with a spacious living room, with room for a large dining table and study space, a separate fully fitted kitchen, a modern bathroom and a generous double bedroom. Sold with allocated off-street parking and chain free.

Pages Walk is enviably located in the heart of SE1, a short distance from Tower Bridge Road, and Bermondsey Street, with London Bridge, Borough Market and the South Bank just beyond. Offering numerous local amenities and excellent transport links.

### Features

- Chain Free Sale
- Immaculately Presented
- One Double Bedroom
- Large Living Room
- Separate Kitchen
- Off-Street Parking

# Pages Walk, London, SE1



Total area (approx.): 48.6 sq. m (523.1 sq. ft)