



## Oxley Close, SE1

### £200,000

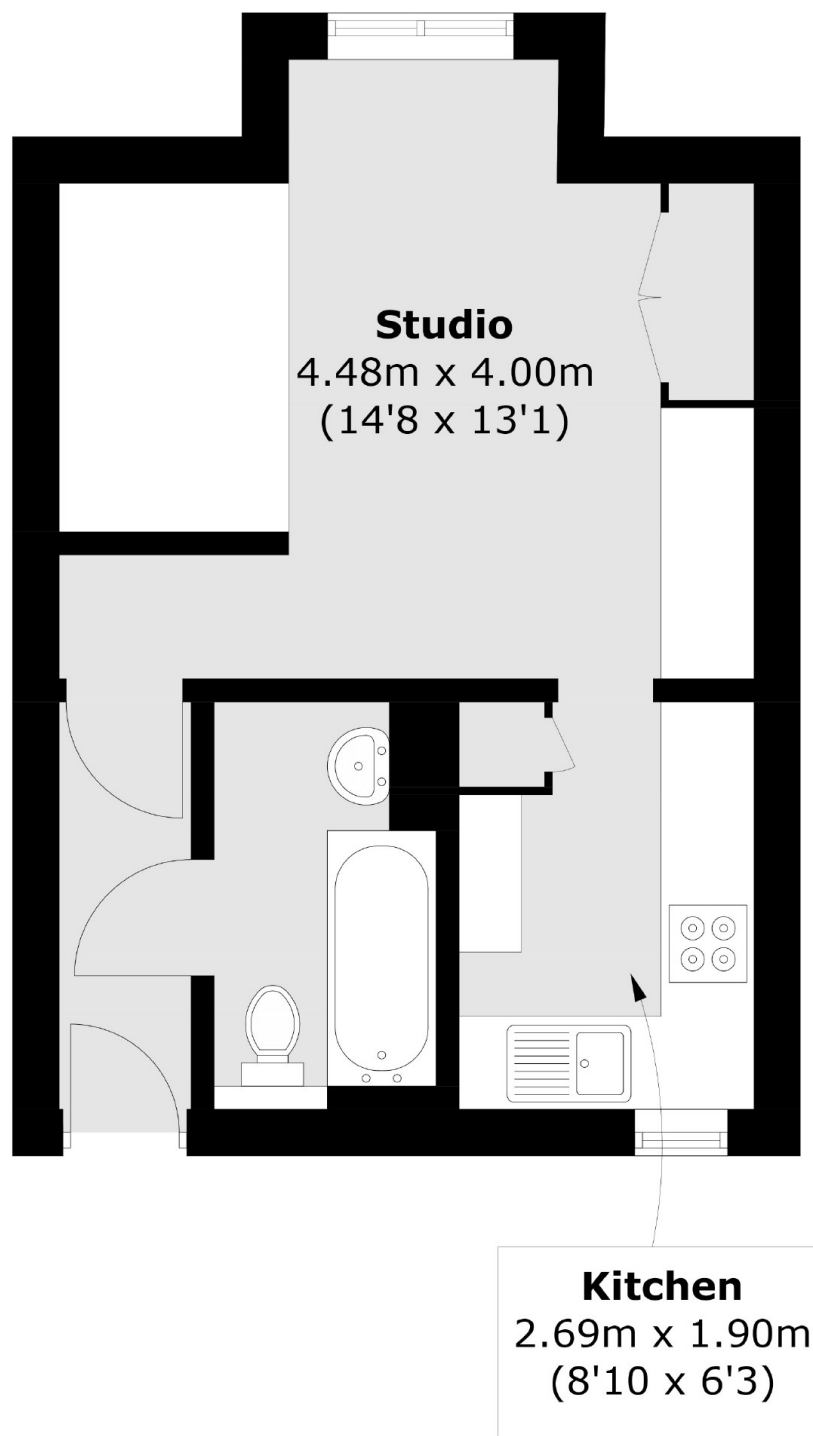
A beautifully presented raised ground floor studio apartment, offering a spacious main living area, a fully fitted recessed kitchen, and a modern three-piece bathroom. The property benefits from ample storage and allocated off-street parking. Offered to the market chain free, this home is available immediately.

Oxley Close is a peaceful residential street, discreetly set back from Rolls Road and within easy reach of a wide range of local amenities. Excellent transport links include nearby bus routes, Elephant & Castle, Bermondsey Underground, and South Bermondsey Station, providing convenient access across London.

### Features

- Raised Ground Floor
- Studio Apartment
- Ample Storage
- Off-Street Parking
- Long Lease
- Chain Free Sale

# Oxley Close, London, SE1



Total area (approx.): 28.3 sq. m (304.6 sq. ft)