



Long Lane, SE1

£450,000

An attractive modern apartment, spread over in excess of 600 sq ft, with a generous open plan kitchen and living room, with ample room for dining, a large bathroom and generous double bedroom, plus residents' porter and secure parking. Chain free sale.

Set just off Borough High Street, on Long Lane, the Madison Apartments benefit from excellent transport links and an array of attractions and amenities, such as London Bridge Station, the Shard, Borough Market & Bank Side.

Features

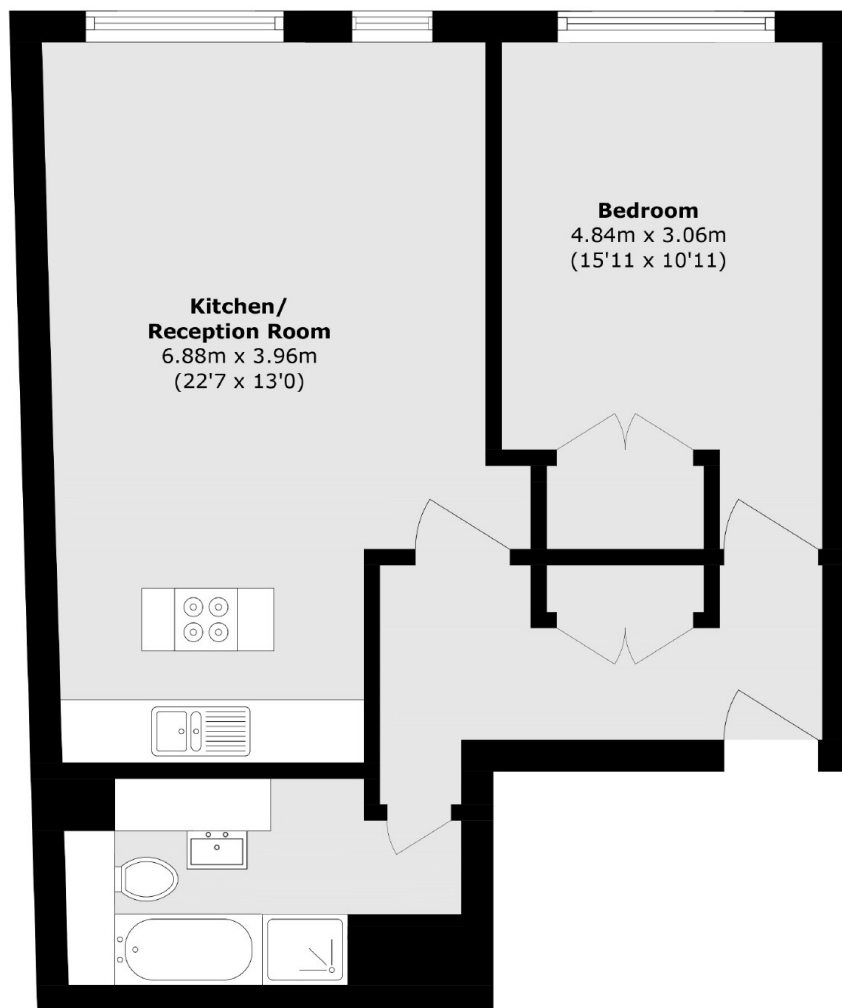
- 5th Floor Apartment
- Over 600 sq ft
- Residents' Porter
- Long Lease
- Very Central Location
- Valid EWS1 Form
- Secure Off-Street Parking
- Chain Free Sale



Long Lane, SE1



Long Lane, London, SE1



Total area (approx.): 56.6 sq. m (609.2 sq. ft)