

## Union Street, SE1

### £210,000

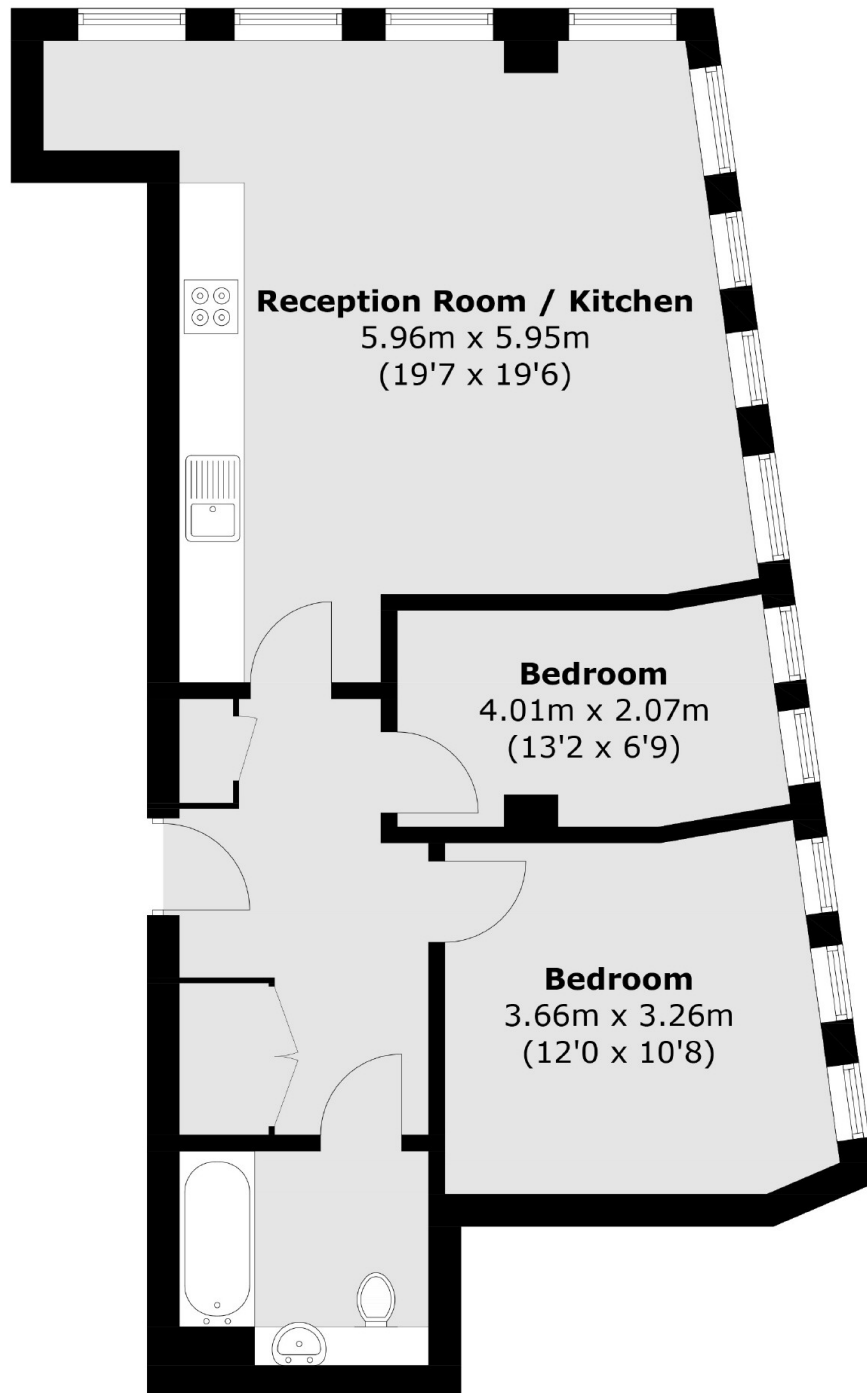
30% Shared Ownership. A highly attractive fifth floor apartment, finished to a very high specification, with wonderful full height windows, air-conditioning and skyline views, a spacious open plan kitchen and living room, with ample space for dining, two bedrooms and a three piece family bathroom.

The Music Box is incredibly well located, in the heart of SE1, with incredible transport links from Southwark, London Bridge, Waterloo and Blackfriars Stations, plus numerous local amenities and attractions, such as Borough Market, the South Bank, the Tate Modern, Old Vic, the Cut and Lower Marsh.

### Features

- 30% Shared Ownership
- Monthly Rent: £513
- Very High Specification
- Floor to Ceiling Windows
- 5th Floor Apartment
- Open Plan Living
- Stunning Views

Union Street,  
London, SE1



**Dexters**

London Bridge  
54 Borough High Street  
London  
SE1 1XL  
Sales  
020 7650 5 100

Energy Rating: . We aim to make our particulars both accurate and reliable. However they are not guaranteed; nor do they form part of an offer or contract. If you require clarification on any points then please contact us, especially if you're traveling some distance to view. Please note that appliances and heating systems have not been tested and therefore no warranties can be given as to their good working order.

 **RICS** | Regulated  
Estate Agent  
and Letting Agent

[dexters.co.uk](https://www.dexters.co.uk)