



Burbage Close, SE1

£380,000

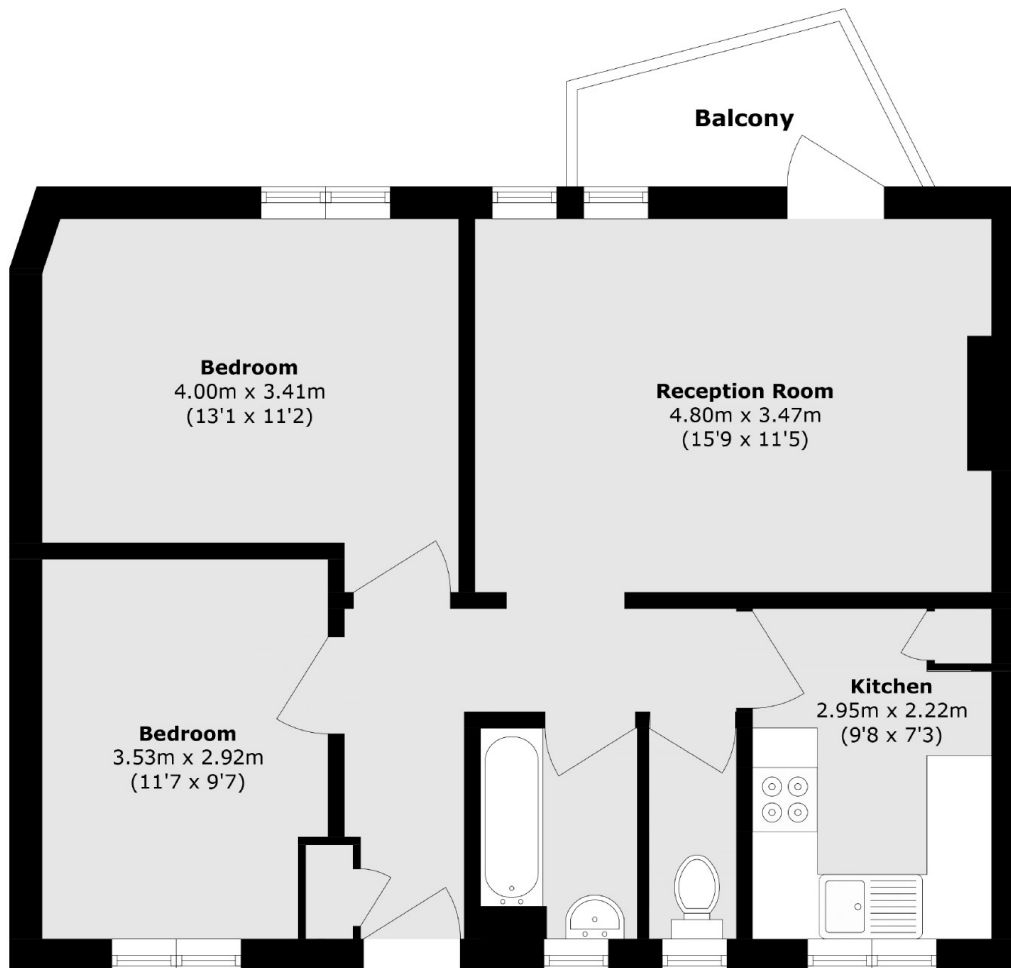
An attractive top floor flat with a separate kitchen and a large living room, two generous double bedrooms, a three piece bathroom, ample storage and a private balcony. Permit parking is available. Offers in excess of £380,000.

Burbage Close is a quiet side street, located just off Great Dover street, 0.4 miles from Borough tube station, with London Bridge station & Borough Market, just beyond.

Features

Offers in excess of £380,000
Two Double Bedrooms
Top Floor Flat
Private Balcony
Secure Entry
Permit Parking Available
Chain Free Sale

Burbage Close, London, SE1



Total area (approx.): 58.9 sq. m (633.9 sq. ft)

Balcony area (approx.): 3.4 sq. m (36.5 sq. ft)

Dexters

London Bridge
54 Borough High Street
London
SE1 1XL
Sales
020 7650 5 100

Energy Rating: D. We aim to make our particulars both accurate and reliable. However they are not guaranteed; nor do they form part of an offer or contract. If you require clarification on any points then please contact us, especially if you're traveling some distance to view. Please note that appliances and heating systems have not been tested and therefore no warranties can be given as to their good working order.

 **RICS** | Regulated
Estate Agent
and Letting Agent

[dexters.co.uk](https://www.dexters.co.uk)