



## Scovell Road, SE1

### £400,000

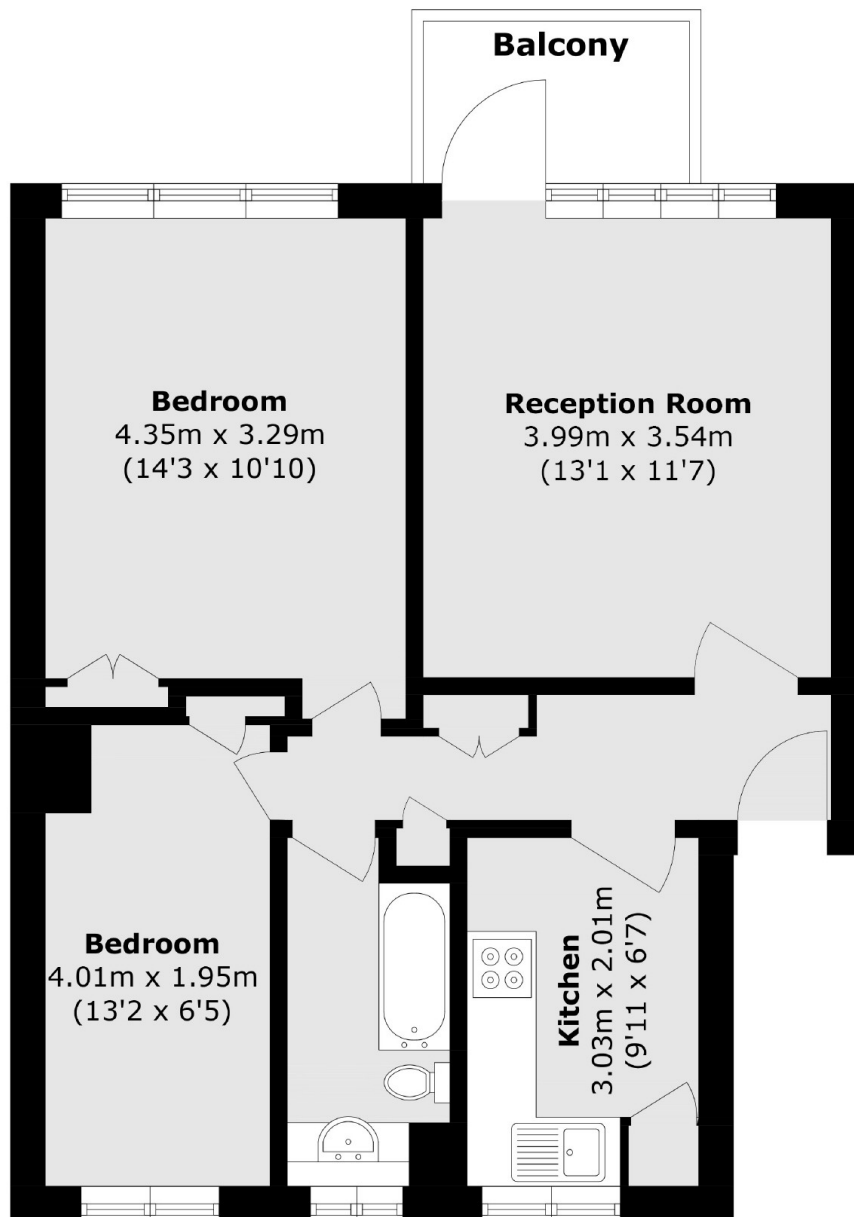
A beautifully presented first-floor flat featuring a spacious living room opening onto a private south-facing balcony, a separate fully fitted kitchen, two bedrooms, and a modern three-piece family bathroom. The property benefits from ample built-in storage, an external storage space, and access to permit parking. Ideally located close to local amenities and transport links.

Scovell Road is perfectly positioned just off Southwark Bridge Road, placing London Bridge, Southwark, and Elephant & Castle all within easy reach. The neighbourhood is alive with character, from the gourmet delights of Borough Market to the riverside galleries and theatres of the South Bank. Independent cafés, lively bars, and an eclectic mix of restaurants are all on the doorstep, making this a fantastic spot to enjoy everything central London has to offer.

### Features

- First Floor Flat
- Two Bedrooms
- Separate Kitchen & Living room
- South Facing Balcony
- Permit Parking Available
- Chain Free Sale
- Offers in Excess of £400,000

# Scovell Road, London, SE1



Total area (approx.): 53.6 sq. m (576.9 sq. ft)

Balcony area (approx.): 3.2 sq. m (34.4 sq. ft)

## Dexters

London Bridge  
54 Borough High Street  
London  
SE1 1XL  
Sales  
020 7650 5 100

Energy Rating: . We aim to make our particulars both accurate and reliable. However they are not guaranteed; nor do they form part of an offer or contract. If you require clarification on any points then please contact us, especially if you're traveling some distance to view. Please note that appliances and heating systems have not been tested and therefore no warranties can be given as to their good working order.

 **RICS** | Regulated  
Estate Agent  
and Letting Agent

dexters.co.uk