



Sanctuary Street, SE1

£650,000

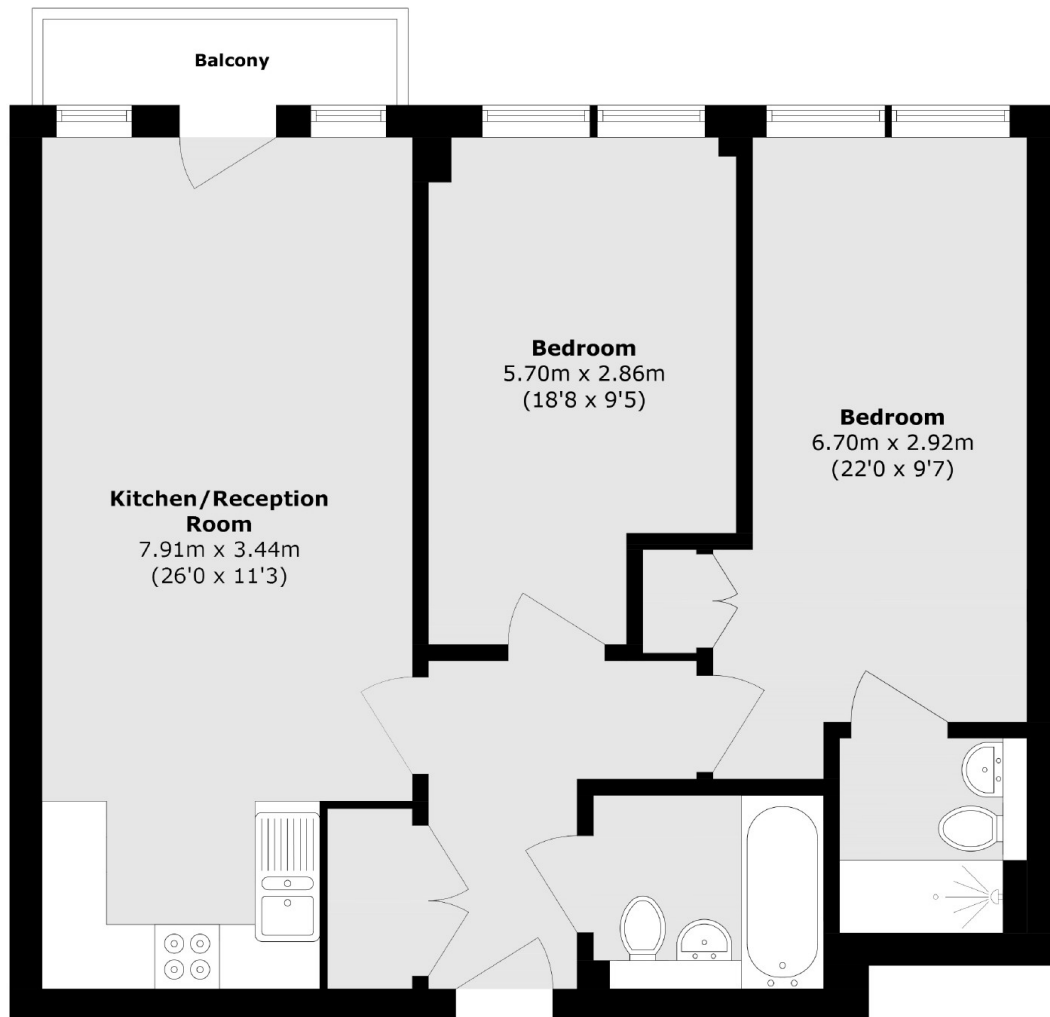
A highly attractive modern apartment featuring a spacious open-plan living area with a contemporary kitchen, opening onto a private balcony. The property offers two double bedrooms, two bathrooms, ample storage, and the additional benefit of secure allocated underground parking.

Sanctuary Street is ideally located, just behind Borough Station, tucked back off Marshalsea Road, at the foot of Borough High Street. London Bridge, Borough Market and the South Bank are all close by, with excellent transport links across the city.

Features

- Two Bedrooms & Two Bathrooms
- Private Balcony
- Lift Access & Secure Entry
- Secure Underground Parking
- Excellent Transport Links

Sanctuary Street, London, SE1



Total area (approx.): 71.4 sq. m (768.5 sq. ft)

Balcony area (approx.): 2.6 sq. m (27.9 sq. ft)

Dexters

London Bridge
54 Borough High Street
London
SE1 1XL
Sales
020 7650 5 100

Energy Rating: . We aim to make our particulars both accurate and reliable. However they are not guaranteed; nor do they form part of an offer or contract. If you require clarification on any points then please contact us, especially if you're traveling some distance to view. Please note that appliances and heating systems have not been tested and therefore no warranties can be given as to their good working order.

 **RICS** | Regulated
Estate Agent
and Letting Agent

[dexters.co.uk](https://www.dexters.co.uk)