



Empire Square South, SE1

£400,000

A stylish fifth-floor apartment featuring a spacious open-plan kitchen and living area, two private balconies, a generously proportioned double bedroom, and a modern three-piece bathroom. Enjoy attractive views, 24-hour concierge service, and lift access within this well-maintained development.

Empire Square boasts a prime SE1 address at the foot of Borough High Street, just 0.4 miles from London Bridge Station and the world-famous Borough Market, with Borough Underground station moments away. This lively neighbourhood offers an array of artisan cafés, acclaimed restaurants, and boutique shops, while the South Bank's theatres, galleries, and riverside walks are all within easy

Features

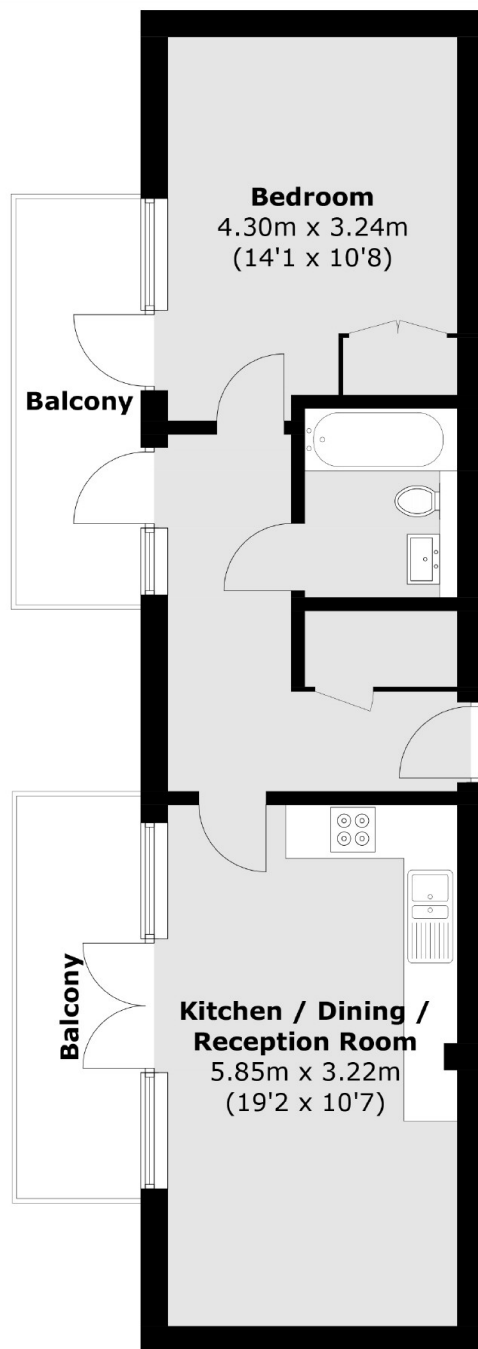
- 5th Floor Apartment
- Two Private Balconies
- Great Views
- Open Plan Living Space
- 24 Hour Concierge
- Excellent transport Links



Empire Square South, SE1



Empire Square South, London, SE1



Total area (approx.): 47.4 sq. m (510.2 sq. ft)
Balcony area (approx.): 12.6 sq. m (135.6 sq. ft)