

## Green Walk, SE1

### £495,000

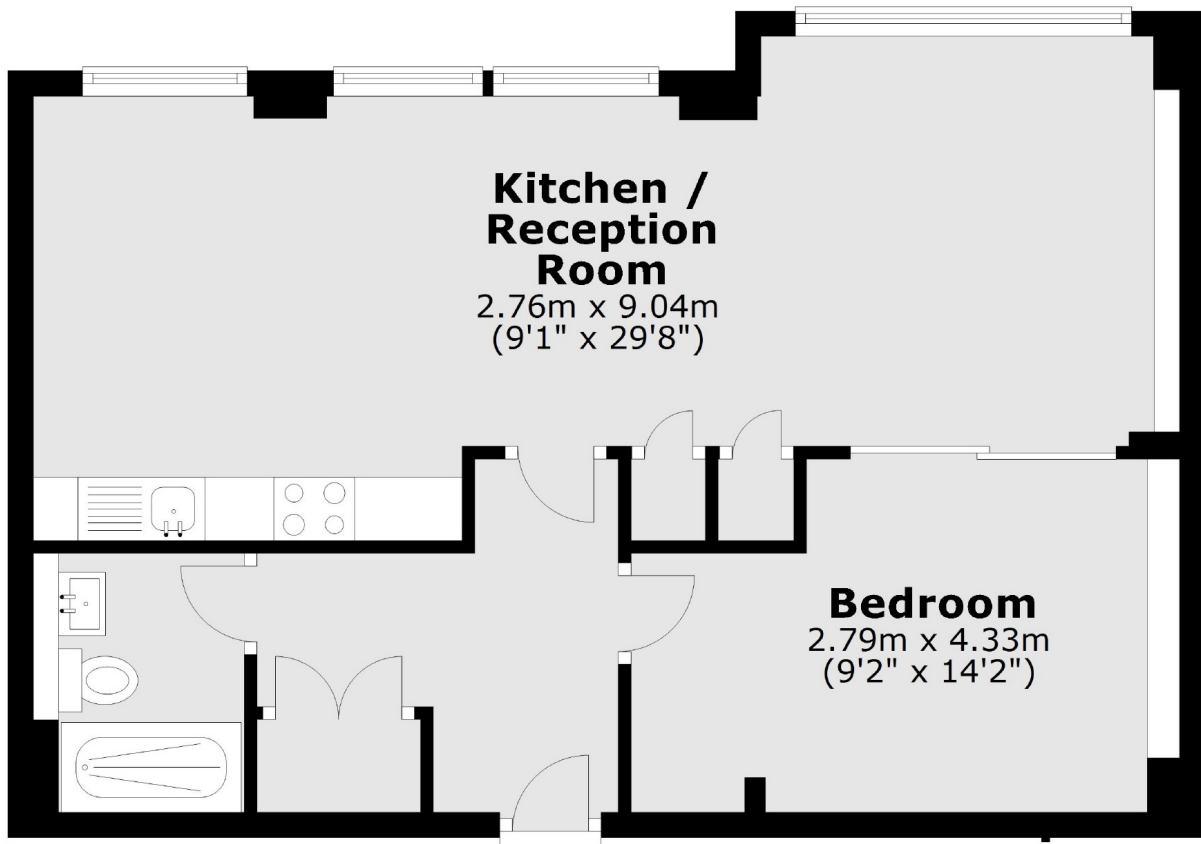
An immaculately presented Warehouse Conversion with high ceilings, large windows and high spec fittings, a large open plan living room and kitchen, a generous double bedroom and a three piece bathroom. Sold Chain Free.

The Jam Factory is located only 0.8 miles from London Bridge station and 0.8 miles from Bermondsey station. The shops, cafés, delis and restaurants on Bermondsey Street are only 0.2 miles away.

### Features

- Chain Free Sale
- Warehouse Conversion
- Large Sash Windows
- Exposed Brickwork
- Residents' Porter
- Valid EWS1 Form in Place

Green Walk,  
London, SE1



Total area: approx. 52.7 sq. metres (567.0 sq. feet)