



Southwark Park Road, SE16

£375,000

An immaculately presented one bedroom maisonette, with a spacious living room and modern eat-in kitchen, a generous double bedroom and a modern three piece bathroom, plus a substantial private south-facing garden.

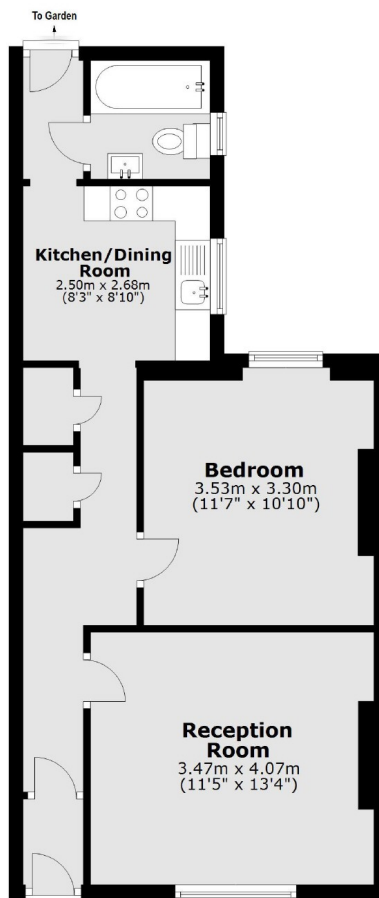
Located on the edge of the Thorburn Square Conservation, this is a fantastic location with numerous amenities nearby, the green spaces of Southwark Park and excellent links into the city via Bermondsey and London Bridge.

Features

- OIEO £385,000
- Large Private Garden
- Own Front door
- Feature Fireplace
- Large Windows
- Eat-in Kitchen
- Ample Storage

Southwark Park Road, London, SE16

Lower Ground Floor



Total area: approx. 49.2 sq. metres (529.4 sq. feet)