



## Hilary Mews, SE1

£1,050,000

A highly desirable duplex Penthouse Apartment, with fantastic skyline views in both directions, taking in both the London Eye to the West and the Shard to the North East, a spacious open plan living area, with a high spec modern kitchen and ample room for dining, plus two double bedrooms, two bathrooms, two balconies and air-conditioning.

ChatGPT said: Brandon House enjoys a prime location with excellent transport links and a vibrant local scene, including cafés and bars just steps away on the High Street. The bustling Borough Market, trendy Bermondsey Street, iconic Shard, and lively South Bank are all within easy walking distance.

### Features

- Duplex Penthouse Apartment
- Two Private Balconies
- Two Double Bedrooms & Two Bathrooms
- 24 Hour Concierge
- Air Conditioning
- Lift Access & Secure Entry
- Chain Free Sale



## Hilary Mews, SE1

Brandon House is one of SE1's premier gated developments, with a very exclusive feel and a high quality finish. Benefits include a 24 hour concierge, cycle storage, secure entry and lift access.

The apartment itself is stunning, with very high ceilings, large windows and plenty of natural light. There are fantastic views from both floors, taking much of the skyline including the Shard, whilst the London Eye is visible from the upper floor.

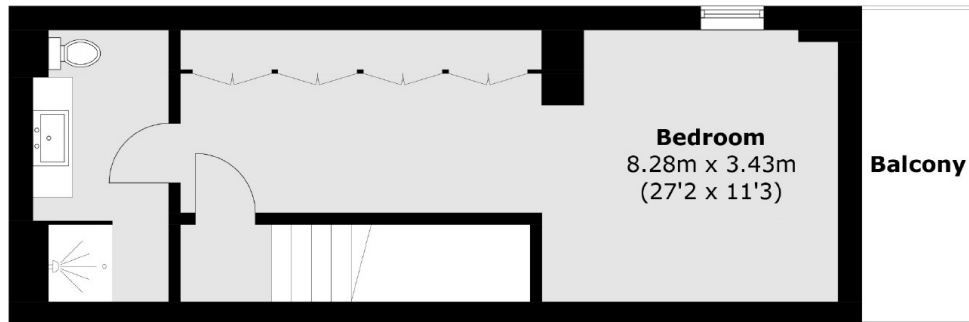
Both bedrooms are double rooms, each with very large fitted wardrobes. There are two bathrooms, including a smart en-suite bathroom, with a large shower and a second guest bathroom on the lower floor.

The main living space again benefits from the high ceilings and a south easterly, with a high spec modern kitchen and integrated Siemens appliances, plenty of room for dining and separate seating space.

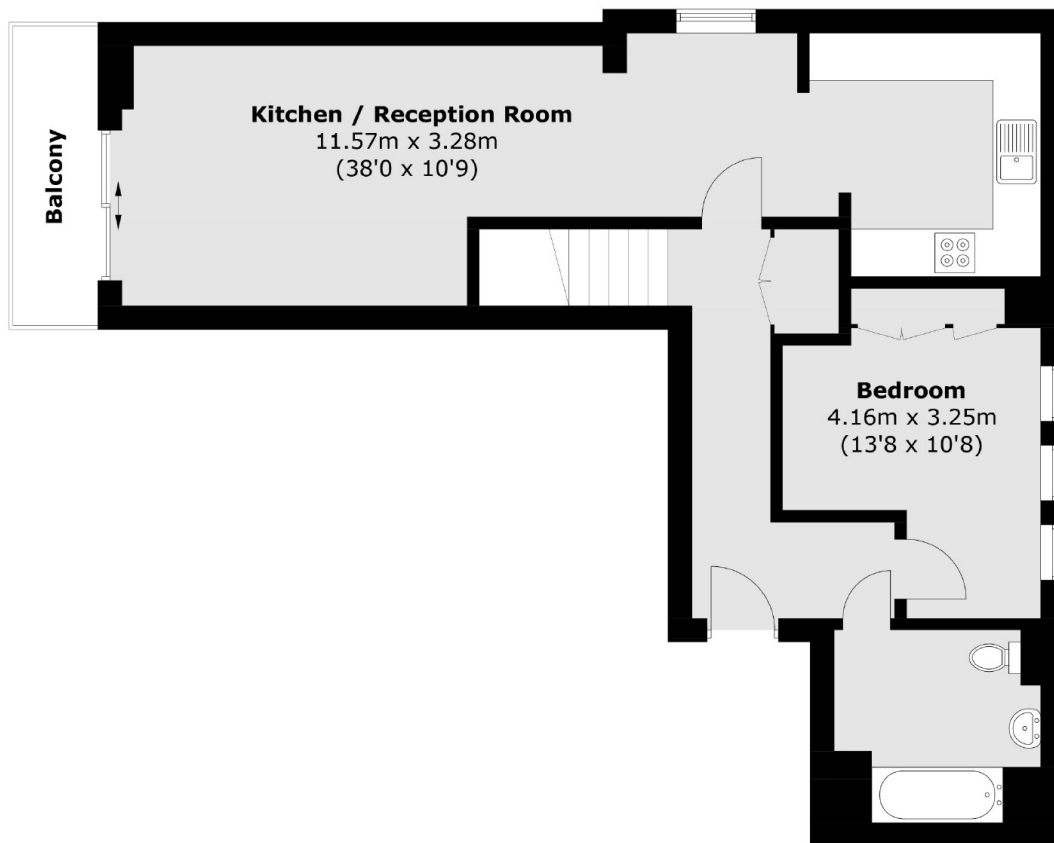




# Hilary Mews, London, SE1



## Sixth Floor



## Fifth Floor

Total area (approx.): 98.0 sq. m (1,054.7 sq. ft)  
Balcony: 9.7 sq. m (104.4 sq. ft)