



Park Street, SE1

£450,000

A beautifully refurbished one-bedroom flat featuring a spacious living room, a separate fully fitted kitchen with high-quality appliances, and a private balcony. The property also offers a generously sized double bedroom, large hallway storage cupboards, and a modern three-piece bathroom. Offered to the market chain free.

Park Street boasts an enviable location just moments from the River Thames and beside the world-famous Borough Market. London Bridge Station, the South Bank, and an array of amenities are right on the doorstep, along with cultural landmarks such as the Globe Theatre, Tate Modern, and The Shard, making this a truly exceptional spot in the heart of London.

Features

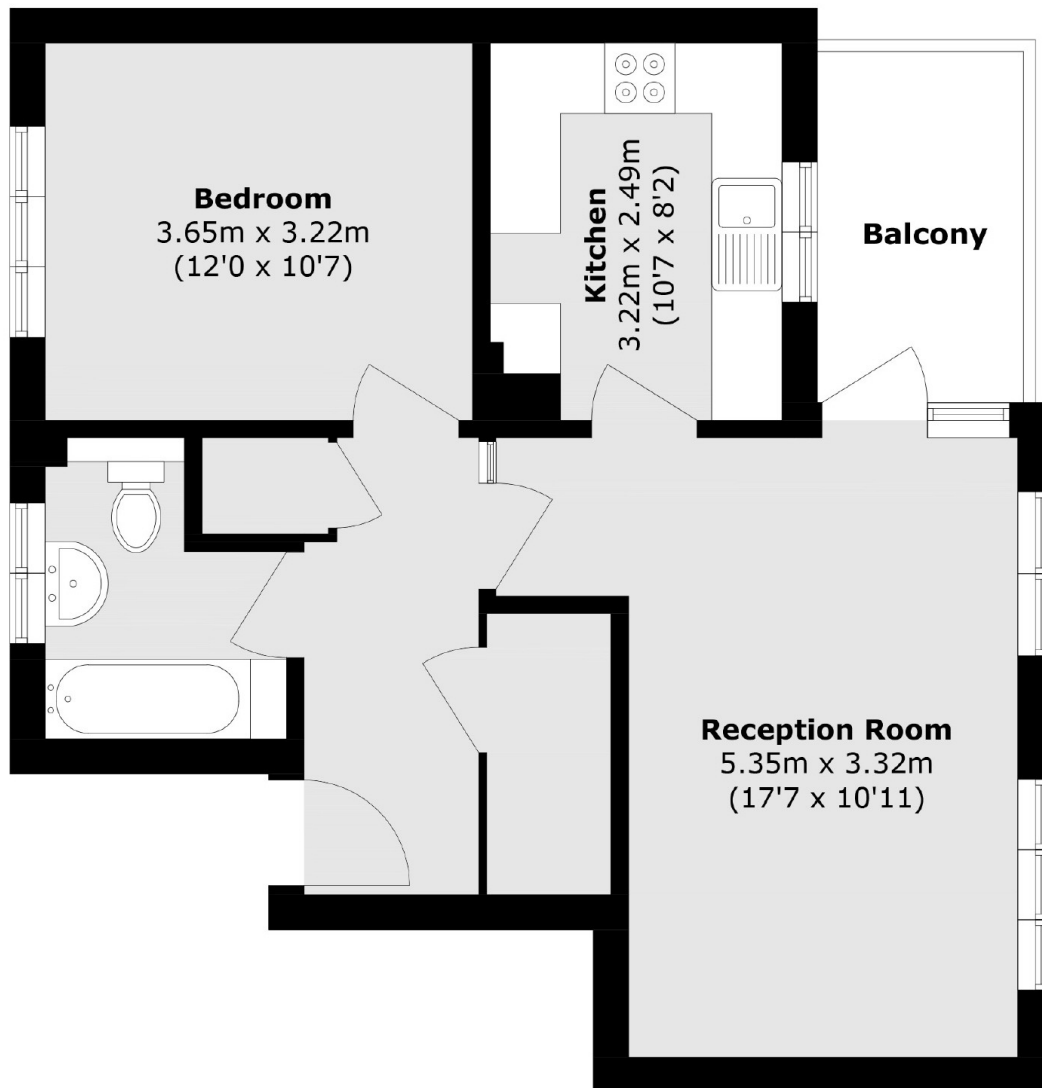
- Very Centrally Located
- Moments from the Thames
- Large Living Room
- Separate Kitchen
- Ample Storage
- Long Lease - 119 Years
- Private Balcony



Park Street, SE1



Park Street, London, SE1



Total area (approx.): 55.2 sq. m (594.1 sq. ft)

Balcony area (approx.): 5.2 sq. m (55.9 sq. ft)