



## Snowsfields, SE1

### £850,000

A highly attractive 5th floor apartment, with a Penthouse Specification, fantastic views and a dual aspect, two balconies, a spacious open plan living room and kitchen, a generous bedroom, with a walk-in wardrobe and a bathroom with both a large shower and a bath.

Snowsfields Yard is incredibly well located, adjacent to London Bridge Station, moments from Bermondsey Street, the Shard and the river, with excellent transport links and a numerous local amenities.

### Features

- 5th Floor Apartment
- Penthouse Specification
- Two Private Balconies
- Dual Aspect
- Fantastic Views
- High Ceilings & Full Height Windows

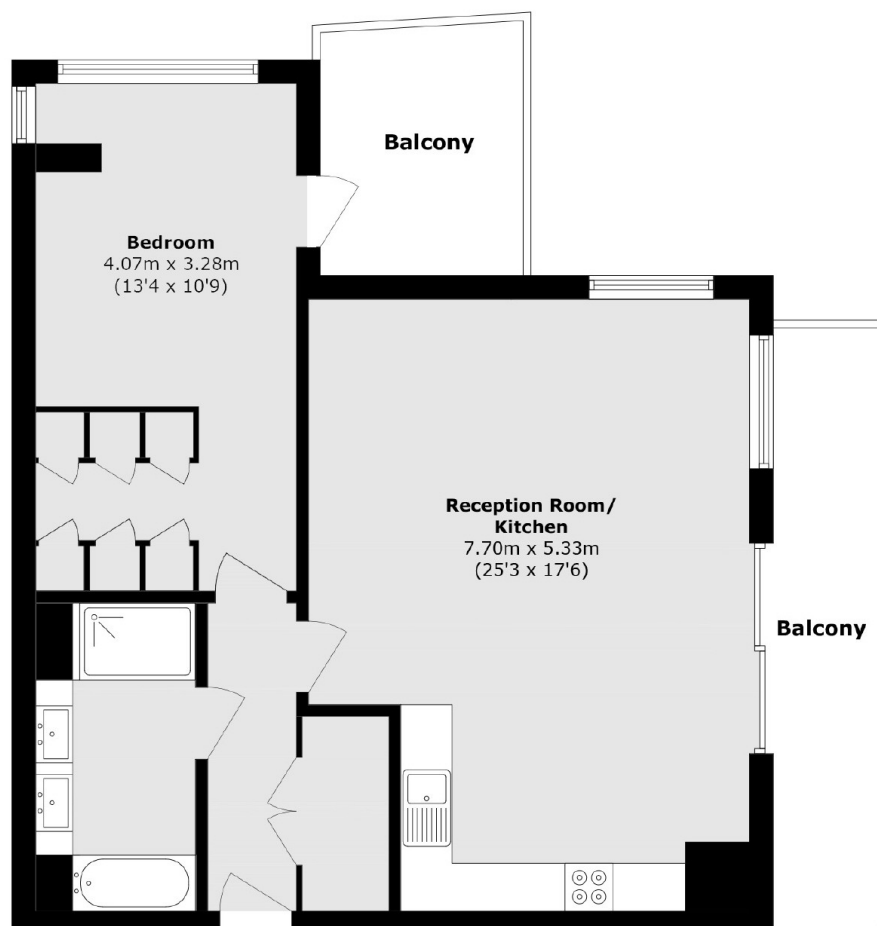


**Snowsfields, SE1**





# Snowsfields, London, SE1



Total area (approx.): 78.0 sq. m (839.5 sq. ft)

Balcony area (approx.): 18.1 sq. m (194.8 sq. ft)

## Dexters

London Bridge  
54 Borough High Street  
London  
SE1 1XL  
Sales  
020 7650 5 100

Energy Rating: B. We aim to make our particulars both accurate and reliable. However they are not guaranteed; nor do they form part of an offer or contract. If you require clarification on any points then please contact us, especially if you're traveling some distance to view. Please note that appliances and heating systems have not been tested and therefore no warranties can be given as to their good working order.

 **RICS** | Regulated  
Estate Agent  
and Letting Agent

[dexters.co.uk](https://www.dexters.co.uk)