



## Westminster Bridge Road, SE1

### £875,000

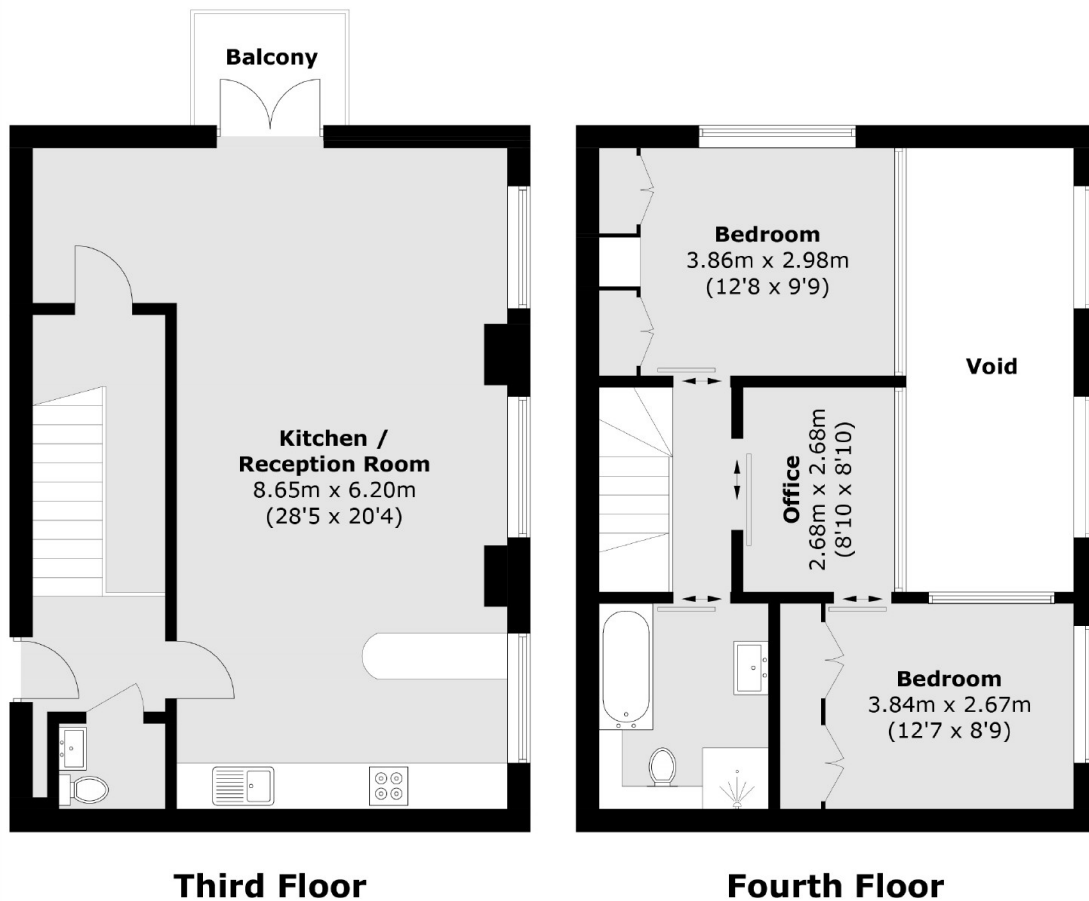
A highly attractive duplex School Conversion, with a very large living room, modern kitchen, with breakfast bar and dining area, double height/vaulted ceilings, a private balcony, two double bedrooms, a three piece bathroom, WC and dressing room/study.

The Chandlery is enviably located, tucked back off Westminster Bridge Road and Gerridge Street, moments from Lambeth North and Waterloo stations, as well as the Imperial War Museum, Lower Marsh and the South Bank.

### Features

- Gated Development
- Duplex School Conversion
- Over 1,200 Sq Ft
- Exposed Brickwork
- Private Balcony
- Low Service Charges
- Vaulted Ceilings

# Westminster Bridge Road, London, SE1



Total area (approx.): 93.7 sq. m (1,008.5 sq. ft)  
(Excluding Void)  
Balcony: 2.9 sq. m (31.2 sq. ft)