



Coopers Road, SE1

£600,000

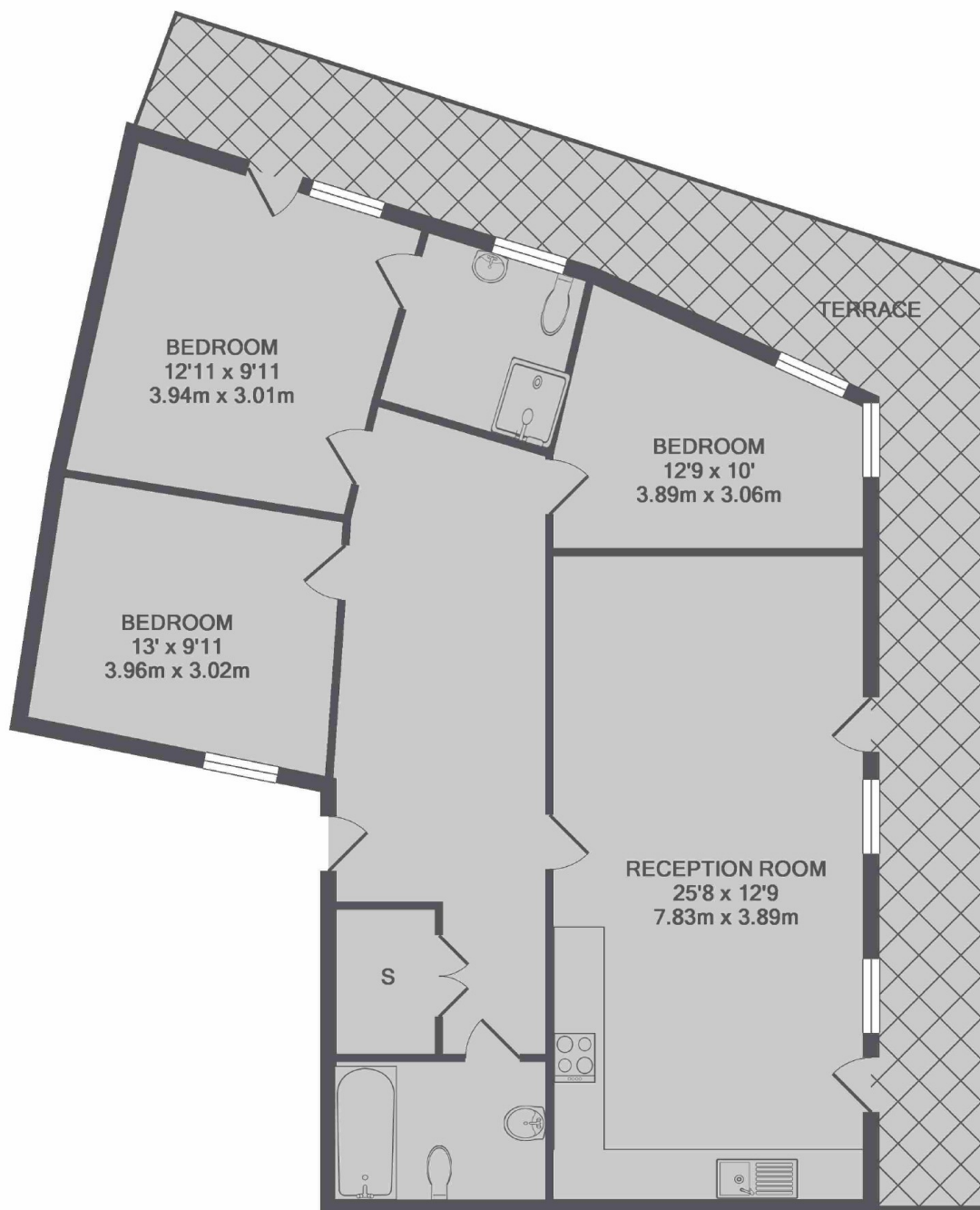
An impressive penthouse apartment of around 1,000 sq ft, boasting breathtaking views and a substantial private roof terrace. The property features a generous open-plan reception room, three well-proportioned double bedrooms, two bathrooms, excellent storage throughout, and is offered chain free.

Coopers Road enjoys a prime location with a wealth of local amenities close at hand. Burgess Park, with its wide open green spaces and popular lake, is just moments away, while excellent transport links are provided via Elephant & Castle, Bermondsey, and South Bermondsey stations, as well as major bus routes taking you across the City.

Features

- Incredible Views
- Penthouse Apartment
- Three Bedrooms
- Two Bathrooms
- Large Private Terrace
- Lift Access & Secure Entry
- Chain Free Sale

Coopers Road, London, SE1



TOTAL APPROX. FLOOR AREA 999 SQ.FT. (92.8 SQ.M.)
Made with Metropix ©2017

Dexters

London Bridge
54 Borough High Street
London
SE1 1XL
Sales
020 7650 5 100

Energy Rating: . We aim to make our particulars both accurate and reliable. However they are not guaranteed; nor do they form part of an offer or contract. If you require clarification on any points then please contact us, especially if you're traveling some distance to view. Please note that appliances and heating systems have not been tested and therefore no warranties can be given as to their good working order.

 **RICS** | Regulated
Estate Agent
and Letting Agent

[dexters.co.uk](https://www.dexters.co.uk)