



## Wordsworth Road, SE1

### £350,000

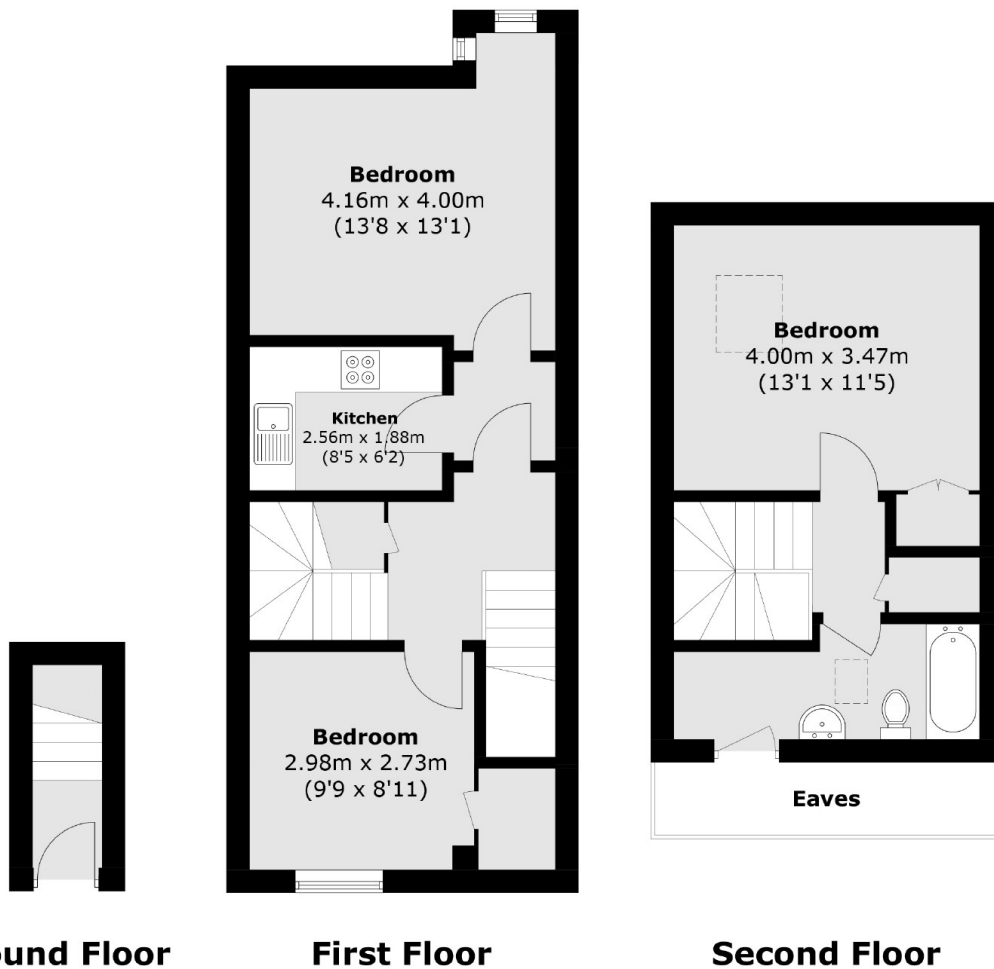
A very spacious, split level flat with two generous double bedrooms, a large living room and a separate kitchen, ample storage and allocated off-street parking. This is a chain free sale.

Wordsworth Road is a quiet residential close, tucked back off Lynton Road, with numerous local amenities nearby. Bermondsey Underground and South Bermondsey Station are both less than a mile away, with excellent bus links too.

### Features

- Two Double Bedrooms
- Over 750 Sq Ft
- Split Level
- Separate Kitchen & Living Room
- Off-Street Parking
- Chain Free Sale

# Wordsworth Road, London, SE1



Total area (approx.): 71.2 sq. m (766.3 sq. ft)  
(Excluding Eaves)

## Dexters

London Bridge  
54 Borough High Street  
London  
SE1 1XL  
Sales  
020 7650 5 100

Energy Rating: . We aim to make our particulars both accurate and reliable. However they are not guaranteed; nor do they form part of an offer or contract. If you require clarification on any points then please contact us, especially if you're traveling some distance to view. Please note that appliances and heating systems have not been tested and therefore no warranties can be given as to their good working order.

 **RICS** | Regulated  
Estate Agent  
and Letting Agent

[dexters.co.uk](https://www.dexters.co.uk)