



Green Walk, SE1

£650,000

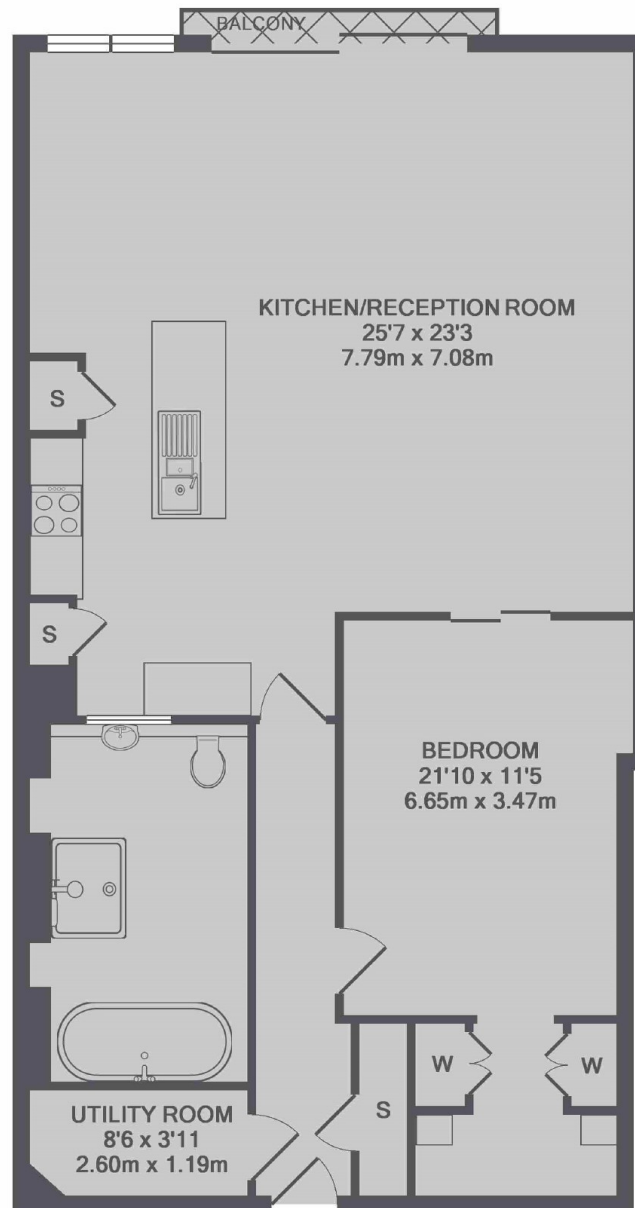
A stunning 999 ft2 apartment in the iconic Hartley's Jam Factory, with a very large open plan living space, generous double bedroom with a walk-in wardrobe, large bathroom, with a shower & roll top bath.

The Jam Factory is one of SE1's most desirable developments with a blend of character & contemporary design, set on Rothsay Street, moments from Bermondsey Street, with London Bridge, Borough Market & the Southbank just beyond.

Features

Almost 1,000 ft2
Large Open Plan
Residents' Porter
Stunning Views
5th Floor Apartment
High Spec Finish
Cash Buyers Only

Green Walk, London, SE1



TOTAL APPROX. FLOOR AREA 999 SQ.FT. (92.9 SQ.M.)

Dexters

London Bridge
54 Borough High Street
London
SE1 1XL
Sales
020 7650 5 100

Energy Rating: C. We aim to make our particulars both accurate and reliable. However they are not guaranteed; nor do they form part of an offer or contract. If you require clarification on any points then please contact us, especially if you're traveling some distance to view. Please note that appliances and heating systems have not been tested and therefore no warranties can be given as to their good working order.

 **RICS** | Regulated
Estate Agent
and Letting Agent

[dexters.co.uk](https://www.dexters.co.uk)