



## Webber Street, SE1

### £425,000

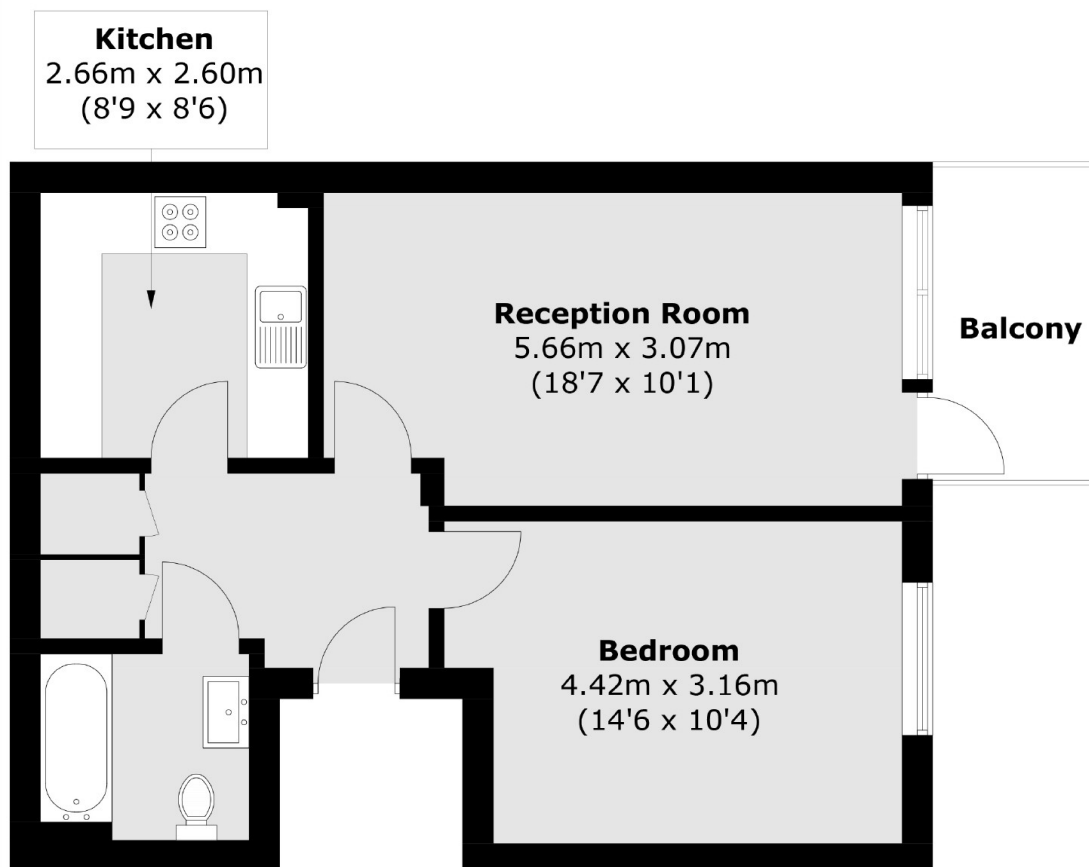
A smartly presented 4th floor apartment in a secure modern development in the heart of SE1, with a spacious living room and separate kitchen, a three piece bathroom, ample storage and a private, west-facing balcony, plus access to two communal terraces. Chain free sale.

Located on Webber Street, the property is very well located for access to Borough, Southwark, London Bridge and Elephant & Castle stations, along with the South bank, Borough Market and numerous local amenities.

### Features

- Separate Kitchen & Living room
- Secure Entry & Lift Access
- Underground Parking
- Private Balcony
- Two Communal Roof Terraces
- Fantastic Westerly Views
- Long Lease - 112 Years
- Chain Free Sale
- Offers in excess of £425,000

# Webber Street, London, SE1



Total area (approx.): 49.9 sq. m (537.1 sq. ft)  
Balcony area (approx.): 4.8 sq. m (51.6 sq. ft)

## Dexters

London Bridge  
54 Borough High Street  
London  
SE1 1XL  
Sales  
020 7650 5 100

Energy Rating: . We aim to make our particulars both accurate and reliable. However they are not guaranteed; nor do they form part of an offer or contract. If you require clarification on any points then please contact us, especially if you're traveling some distance to view. Please note that appliances and heating systems have not been tested and therefore no warranties can be given as to their good working order.

 **RICS** | Regulated  
Estate Agent  
and Letting Agent

[dexters.co.uk](https://www.dexters.co.uk)