



New Globe Walk, SE1

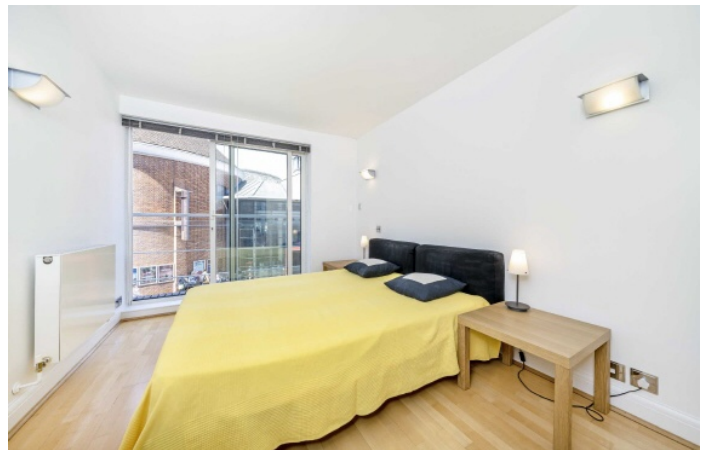
£700,000

A beautifully presented riverside apartment in the prestigious Benbow House, set in the heart of the South Bank. Featuring a bright open-plan kitchen and living area, a spacious double bedroom, a large contemporary bathroom, and excellent built-in storage, the property also boasts a full-width balcony with stunning river views, a communal garden, and the rare benefit of off-street parking.

Benbow House enjoys a prime position on the South Bank, perfectly situated between Blackfriars and London Bridge stations, with Bank and St Paul's just across the river. The Globe Theatre sits directly opposite, while the Tate Modern, riverside cafés, galleries, and an array of

Features

- Share of Freehold
- Views of the River & St Paul's
- Secure Underground Parking
- 24 Hour Concierge
- Private West-Facing Balcony
- Raised Communal Garden
- Chain Free Sale



New Globe Walk, SE1

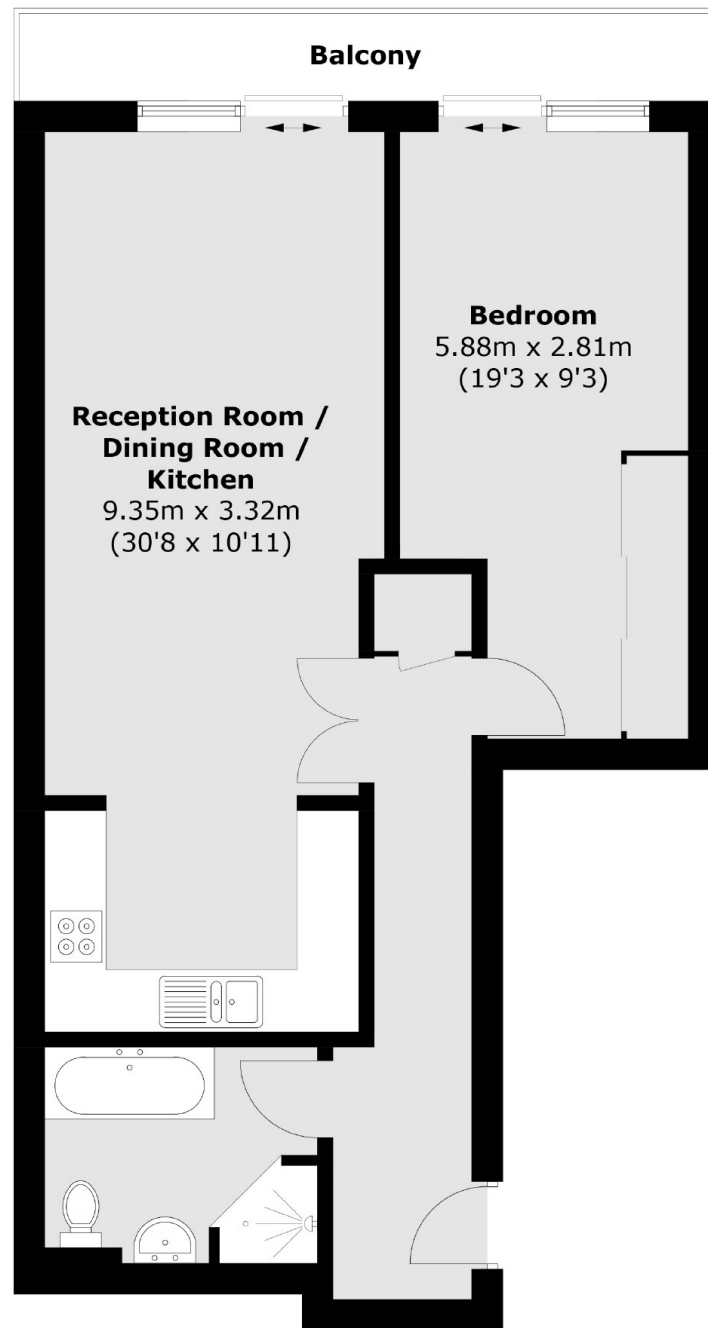
With views of the river and St Paul's this property experiences the very best of the vibrant South Bank, yet is remarkably quiet. From up on the west-facing balcony you can watch the world go by.

It is a fantastic lateral space with lift access from ground level and also from the secure underground car park. The private balcony runs directly off the living room and the bedroom.

It is the largest one bedroom apartment in the development, one of only a few in the development. It is sold with a Share of Freehold, following a recent enfranchisement, giving the residents much greater control over the day to day management and annual charges.



New Globe Walk, London, SE1



First Floor

Total area (approx.): 58.9 sq. m (634.9 sq. ft)
Balcony area (approx.): 5.7 sq. m (61.3 sq. ft)

Dexters

London Bridge
54 Borough High Street
London
SE1 1XL
Sales
020 7650 5 100

Energy Rating: C. We aim to make our particulars both accurate and reliable. However they are not guaranteed; nor do they form part of an offer or contract. If you require clarification on any points then please contact us, especially if you're traveling some distance to view. Please note that appliances and heating systems have not been tested and therefore no warranties can be given as to their good working order.

 **RICS** | Regulated
Estate Agent
and Letting Agent

[dexters.co.uk](https://www.dexters.co.uk)