



Gaywood Street, SE1 £425,000

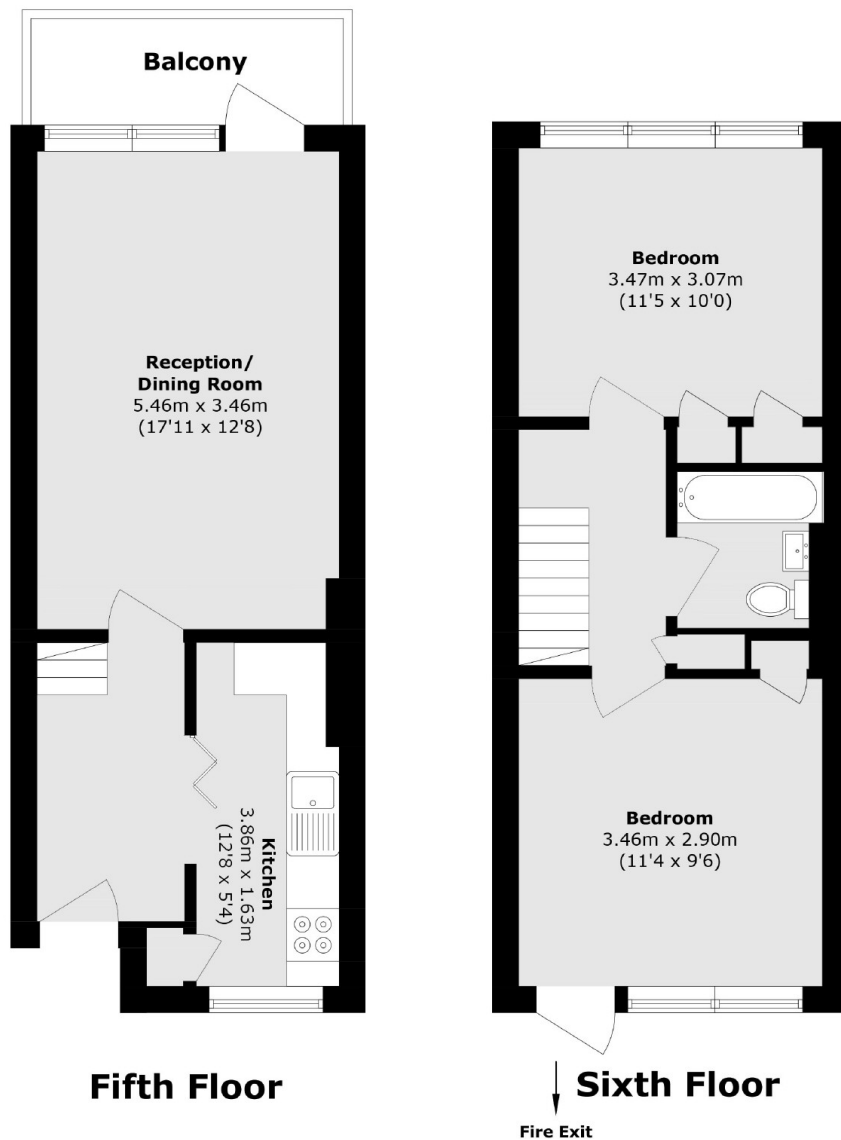
A highly attractive, split level flat on the 5th and 6th floors, with stunning skyline views, a large living room, leading out onto a private south-west-facing balcony, a separate modern kitchen, two double bedrooms and a generous family bathroom. Permit parking is available.

Gaywood Street is a quiet side street, tucked back off the London Road, with easy access to Elephant & Castle stations, the Imperial War Museum & surrounding grounds, plus great links into the City & West End.

Features

- Fantastic Views
- Split Level
- Two Double Bedrooms
- Large Living Room
- Separate Kitchen
- Private Balcony
- Chain Free Sale

Gaywood Street, London, SE1



Total area (approx.): 65.3 sq. m (702.8 sq. ft)

Balcony area (approx.): 4.3 sq. m (46.25 sq. ft)