



Burbage Close, SE1

£410,000

A highly attractive and generously sized two-bedroom flat situated on the 8th floor, offering fantastic skyline views across London.

This bright and well-designed home features a spacious living room, a separate kitchen-diner, newly refurbished bathroom, and two well-proportioned bedrooms with ample storage.

Set within a well-maintained building with lift access, this property combines space, light, and exceptional views. Within a short walk of local amenities and the bustling Borough Market.

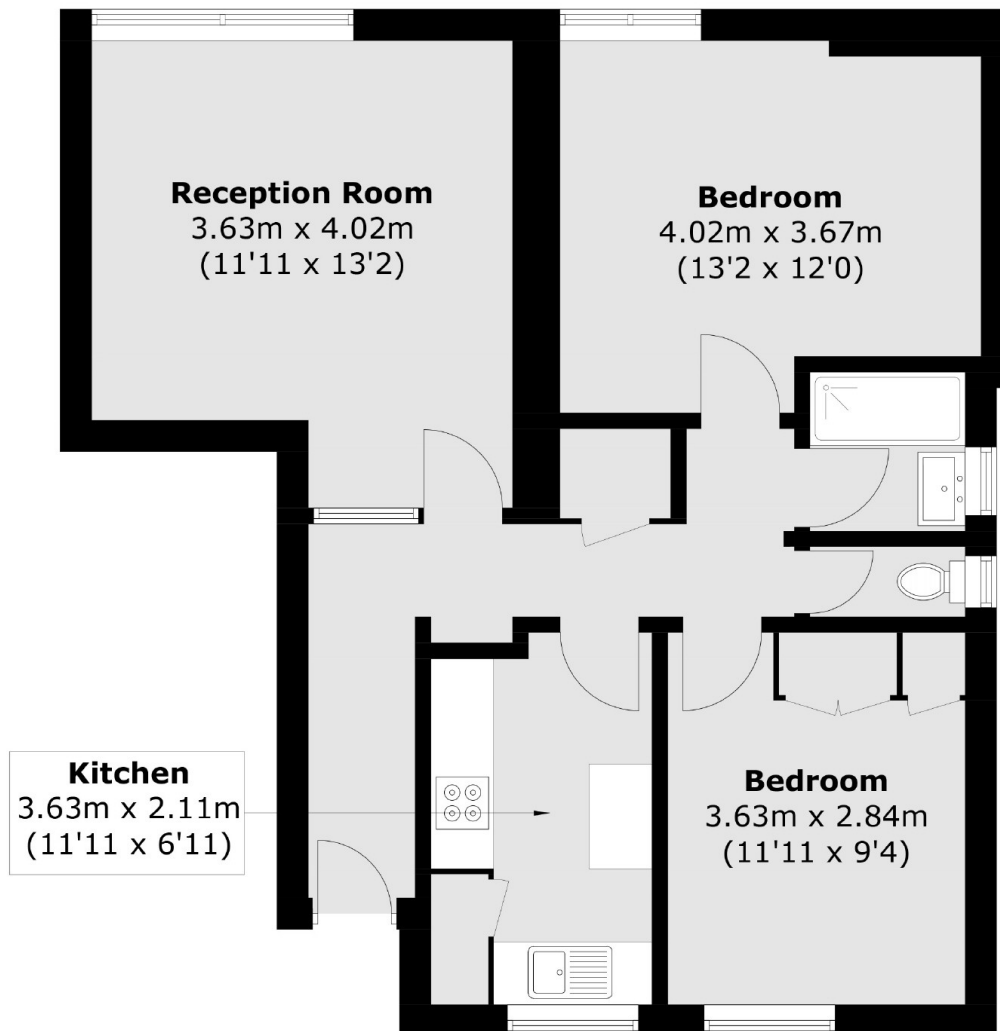
Located in SE1, the flat is just a short walk from Borough and Elephant and Castle Underground stations, offering quick and direct Northern Line access to the City and West End. London Bridge station is also within easy reach, providing Jubilee and Northern line services, as well as National Rail connections across London and

Features

Two Bedrooms
8th Floor
Stunning Panoramic City Views

Secure Development
Very Central Location

Burbage Close, London, SE1



Total area (approx.): 64.7 sq. m (696.4 sq. ft)