



## Grange Road, SE1

### £650,000

An incredibly spacious, almost 850 sq ft, duplex apartment, with an attractive aspect over the communal gardens, double height ceilings, exposed brickwork and period features throughout, a very large living room and a separate kitchen, two bedrooms, a three piece bathroom and ample storage. Offers in excess of £650,000.

Alaska Buildings is a landmark development situated within a short walk of Bermondsey street and Tower Bridge Road and within walking distance of both Bermondsey and London Bridge stations.

### Features

OIEO £650,000  
Warehouse Style Apartment  
Almost 850 sq ft  
Large Living Room  
Separate Kitchen  
24 Hour Concierge  
Communal Gardens  
Chain Free Sale





## Grange Road, SE1

This is an exceptional apartment with a wonderful sense of space and light, offering a blend of modern quality and warehouse style-features, with a dual aspect, high ceilings, exposed brickwork and very large windows.

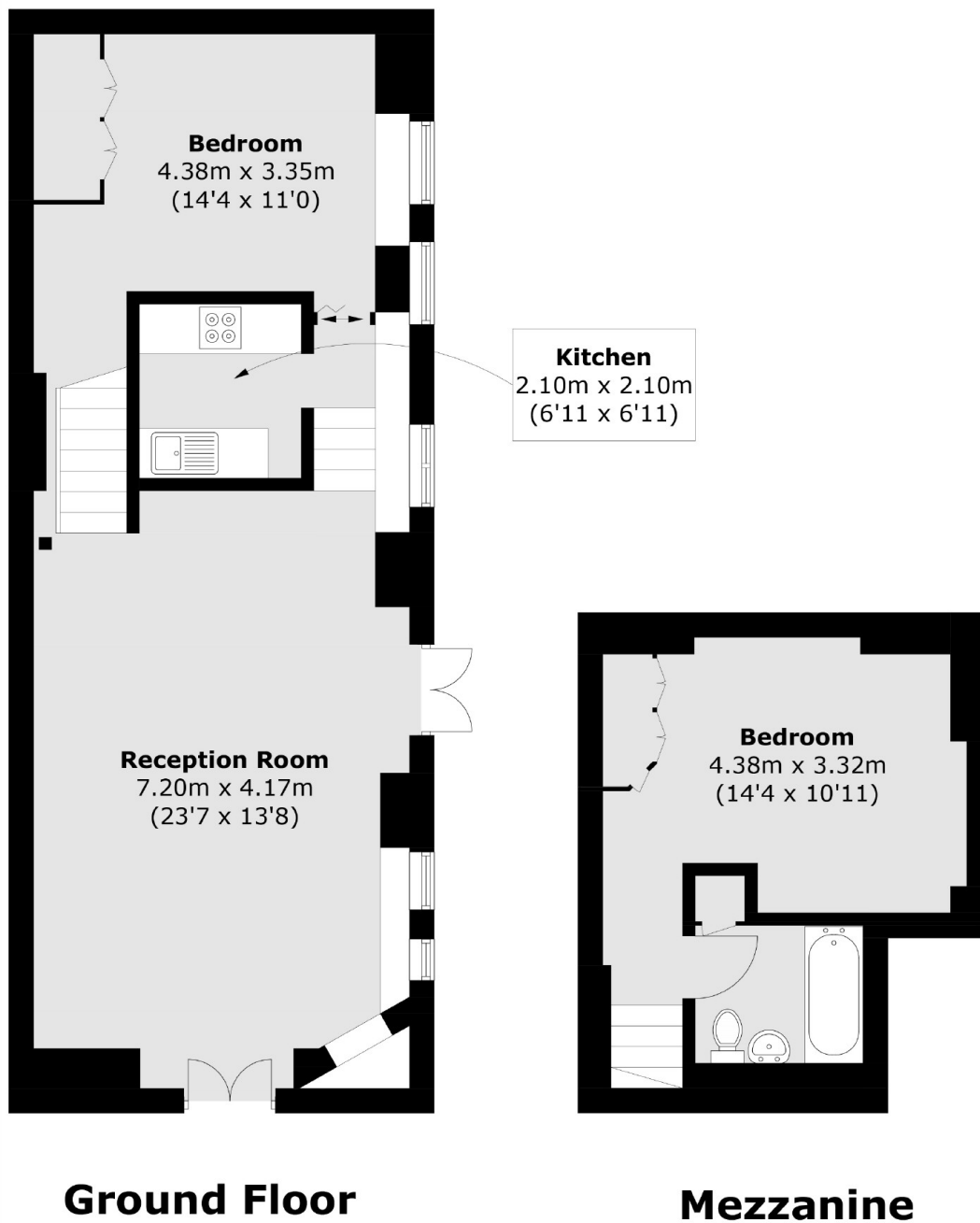
With its own front door, the apartment is directly access through the communal gardens. On the lower floor is a very spacious living room, leading down into the kitchen and the second bedroom. On the floor above is the main bedroom, bathroom with further built-in storage.

The Alaska Buildings is a very exclusive and secure, gated development, steeped in history, with a very hard to find community feel, a 24 hour concierge and attractive communal water gardens.





# Grange Road, London, SE1



Total area (approx.): 78.8 sq. m (848.2 sq. ft)  
(Including Mezzanine)

## Dexters

London Bridge  
54 Borough High Street  
London  
SE1 1XL  
Sales  
020 7650 5 100

Energy Rating: . We aim to make our particulars both accurate and reliable. However they are not guaranteed; nor do they form part of an offer or contract. If you require clarification on any points then please contact us, especially if you're traveling some distance to view. Please note that appliances and heating systems have not been tested and therefore no warranties can be given as to their good working order.

 **RICS** | Regulated  
Estate Agent  
and Letting Agent

[dexters.co.uk](https://www.dexters.co.uk)