



Webber Street, SE1

£425,000

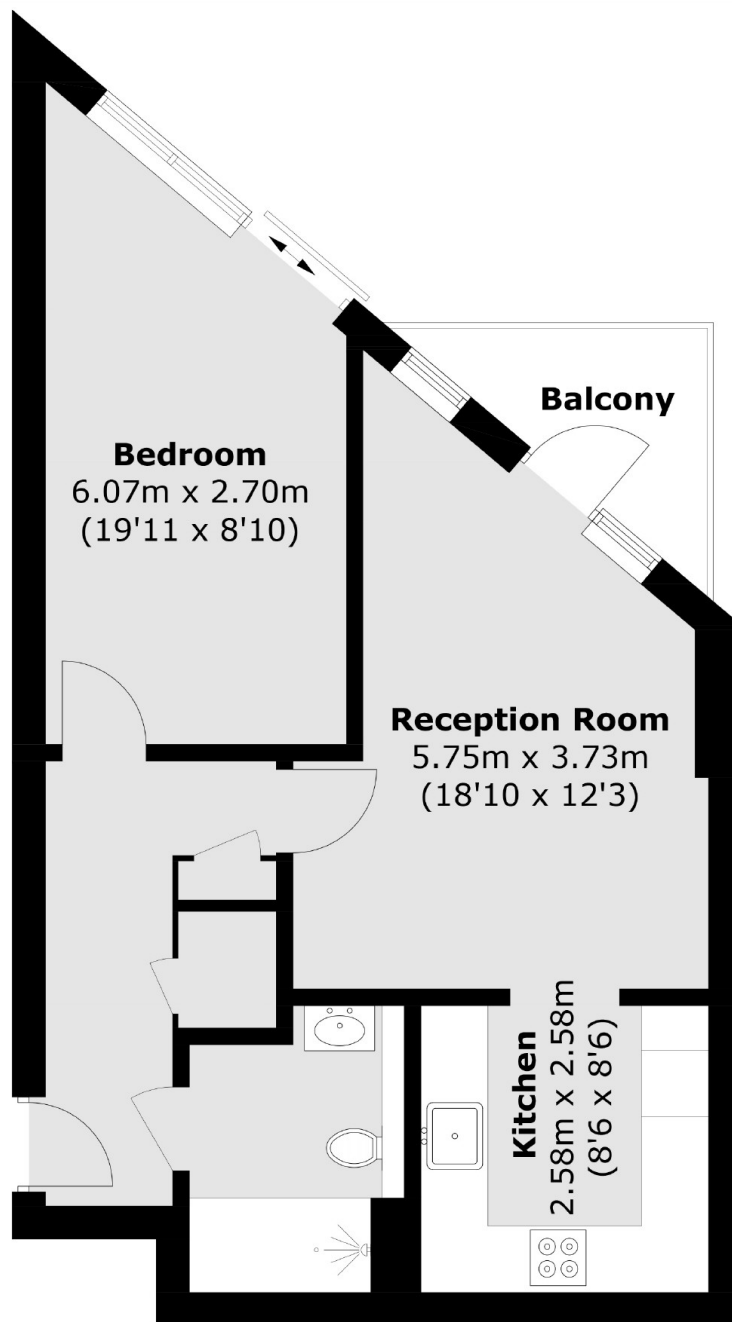
A highly attractive modern apartment with a spacious open plan living room and kitchen, a generous double bedroom, a recently replaced shower room, ample storage and a private balcony, with views of the shard, plus access to two communal terraces, looking out across the city.

Located on Webber Street, the property is very well located for access to Borough, Southwark, London Bridge and Elephant & Castle stations, along with the South bank, Borough Market and numerous local amenities.

Features

- Open Plan Living Space
- Secure Entry & Lift Access
- Private Balcony
- Two Communal Roof Terraces
- Views of the Shard
- Long Lease - 112 Years

Webber Street, London, SE1



Total area (approx.): 49.2 sq. m (529.6 sq. ft)
Balcony: 3.4 sq. m (36.6 sq. ft)

Dexters

London Bridge
54 Borough High Street
London
SE1 1XL
Sales
020 7650 5 100

Energy Rating: . We aim to make our particulars both accurate and reliable. However they are not guaranteed; nor do they form part of an offer or contract. If you require clarification on any points then please contact us, especially if you're traveling some distance to view. Please note that appliances and heating systems have not been tested and therefore no warranties can be given as to their good working order.

 **RICS** | Regulated
Estate Agent
and Letting Agent

dexters.co.uk