



## Lynton Road, SE1

### £800,000

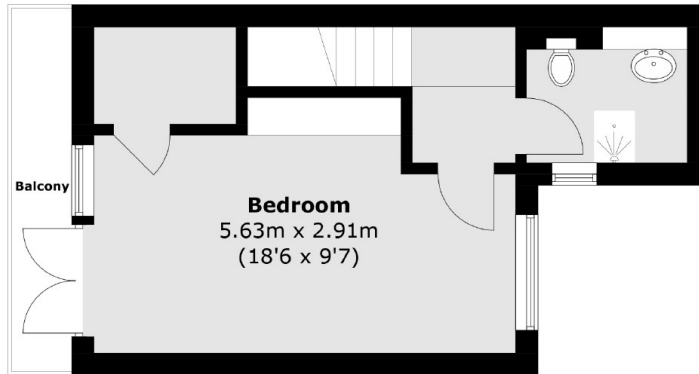
A rare opportunity to purchase a freehold property on sought-after Otterden Terrace. This beautifully arranged three-storey home offers a spacious semi-open plan kitchen and living area, three well-proportioned double bedrooms and two modern bathrooms. Enjoy outdoor living with a top floor balcony and private rear patio garden, perfect for relaxing or entertaining.

Lynton Road is a picturesque, tree-lined street, adjacent to the sought-after Thorburn Square Conservation Area. This peaceful residential setting offers a village-like atmosphere just moments from the heart of London with numerous cafés, restaurants and amenities on your doorstep. There are excellent transport links nearby, including the Jubilee Line at nearby Bermondsey & London Bridge, the Overground at London Bridge & South Bermondsey, plus frequent bus routes across the City.

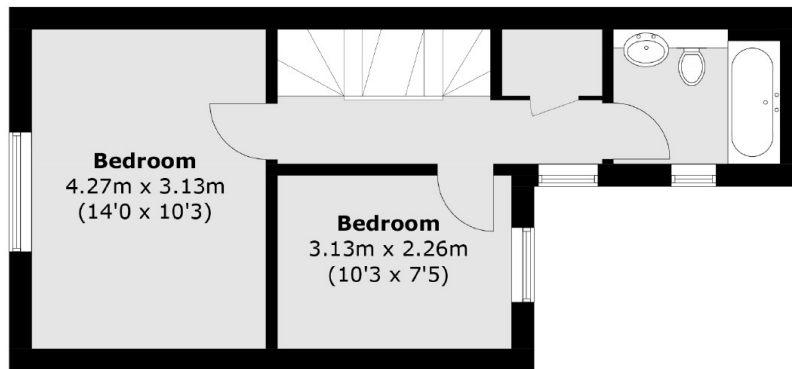
### Features

- Freehold House
- Three Storeys
- Three Double Bedrooms
- Two Bathrooms
- Permit Parking Available
- Rear Patio & Roof Terrace

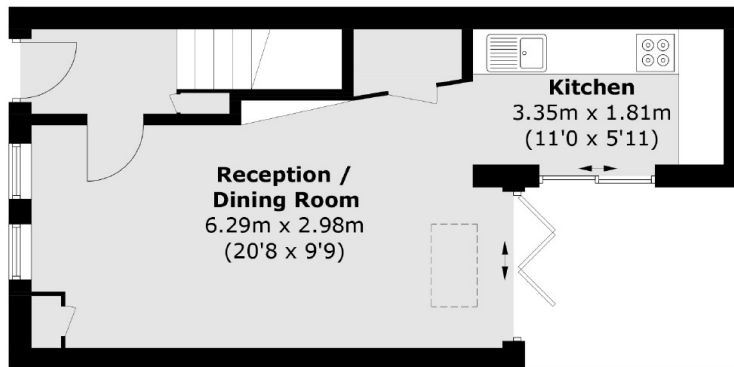
# Lynton Road, London, SE1



## Second Floor



## First Floor



## Ground Floor

Total area (approx.): 95.5 sq. m (1027.8 sq. ft)  
Balcony: 3.8 sq. m (40.9 sq. ft)