



Green Walk, SE1

£1,096 Per week

Three bedroom split-level warehouse style apartment in this former Hartley's Jam Factory. The property is full of character featuring exposed brickwork, original beams and high ceilings. The centrepiece is the impressive open plan living space/kitchen on the upper floor.

The Jam Factory is well located close to Borough Market, Maltby Street Market and Bermondsey Street, all of which feature some of London's finest independent food, coffee shops and pubs.

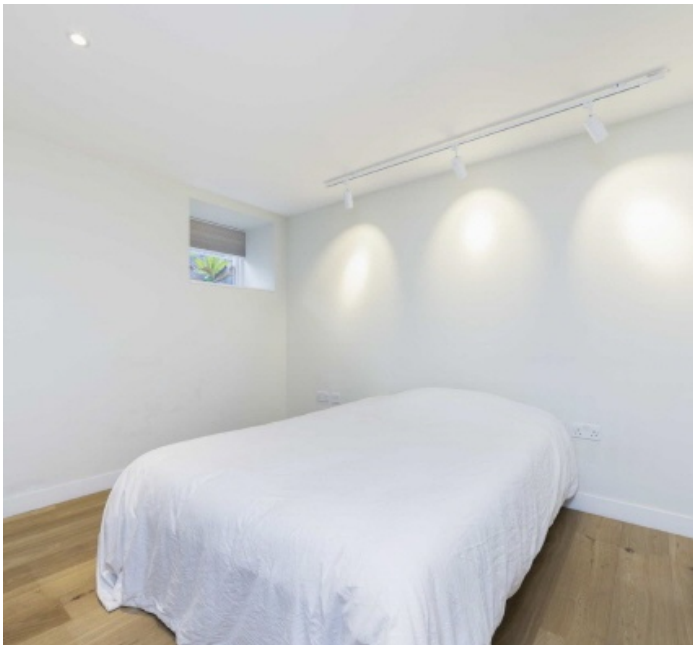
Features

- Impressive Living Space
- Three Double Bedrooms
- Pantry/Utility Room
- 2000 sq ft
- Split Level
- 24hr Porter



Green Walk, SE1

Three bedroom split-level warehouse style apartment in this former Hartley's Jam Factory. The property is full of character featuring exposed brickwork, original beams and high ceilings. The centrepiece is the impressive open plan living space/kitchen on the upper floor.



Green Walk, London, SE1

Lower Ground Floor



Upper Ground Floor



Total area: approx. 186.4 sq. metres (2006.7 sq. feet)