



Pages Walk, SE1

£785,000

This beautifully presented, two bed, first-floor apartment offers 850 sq ft of thoughtfully designed living space, finished to a high specification throughout.

Expansive floor-to-ceiling windows and sliding doors flood the interior with natural light and open onto a private balcony with far-reaching views over the city skyline.

Recently renovated, the apartment includes bespoke in-built storage, a stylish bar-top island, and a fully integrated wine fridge, combining modern convenience with sophisticated design.

Features

Offer Over £785,000
Exceptional Finish
Two Double Bedrooms
Two Bathrooms
Recently renovated
Large Balcony
Secure Development
City Views

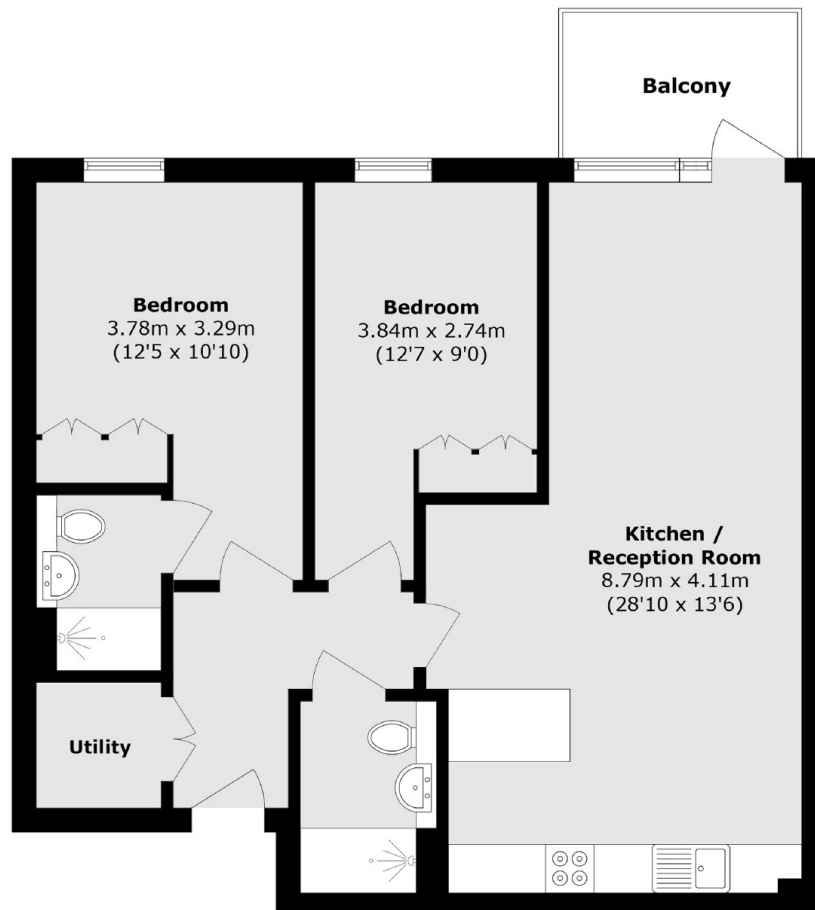


Pages Walk, SE1

The property is located within a quiet and well maintained development with secure gated access. The communal gardens offer a tranquil break from the busy city.



Pages Walk, London, SE1



Total area (approx.): 79.0 sq. m (850.4 sq. ft)

Balcony area (approx.): 5.1 sq. m (54.9 sq. ft)