



Green Walk, SE1
£1,500,000

Dexters



Green Walk, SE1

A truly spectacular split level, Warehouse Conversion in the former Hartley's Jam Factory, spread over 2,000 sq ft with a very large open plan kitchen and living room, utility room, a separate study room, three double bedrooms and two bathrooms.

This apartment benefits from all the best period features from it's high ceilings, exposed brickwork, beams, large sash windows and french doors but is also immaculately presented with a high spec kitchen and two modern bathrooms.

All three bedrooms large doubles on the lower floor. The master bedroom benefits from a large walk-in wardrobe and en-suite bathroom, whilst the other two bedrooms are served by a large family bathroom, with a generous walk-in shower and a bath.

The former Hartley's Jam factory is iconic, award-winning development, with an attractive blend of period charm and contemporary design, accentuating the best original features, yet benefiting from modern fittings throughout.

Benefitting from an on-site concierge, landscaped communal gardens, walkways and a children's' play area, there is a genuine community feel here.

The Jam Factory is one of SE1's most desirable developments, set on Green Walk, moments from Bermondsey Street, with London Bridge, Borough

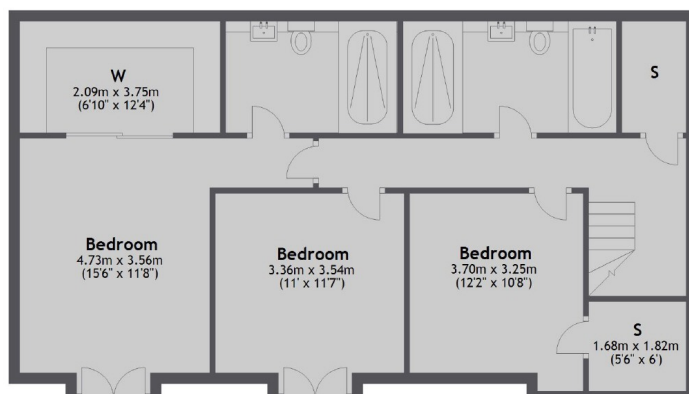
Features

- Over 2,000 Sq Ft
- Split Level
- Three Double Bedrooms
- Additional Study
- Utility Room & Pantry
- 24 Hour Concierge



Green Walk, London, SE1

Lower Ground Floor



Upper Ground Floor



Total area: approx. 186.4 sq. metres (2006.7 sq. feet)

Dexters

London Bridge
54 Borough High Street
London
SE1 1XL
Sales
020 7650 5 100

Energy Rating: C. We aim to make our particulars both accurate and reliable. However they are not guaranteed; nor do they form part of an offer or contract. If you require clarification on any points then please contact us, especially if you're traveling some distance to view. Please note that appliances and heating systems have not been tested and therefore no warranties can be given as to their good working order.

 **RICS** | Regulated
Estate Agent
and Letting Agent

[dexters.co.uk](https://www.dexters.co.uk)