



Great Guildford Street, SE1 £1,100,000

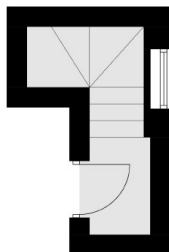
A very rarely available, over 1,400 sq ft split level Penthouse Apartment in a charming period conversion, with a large living room and kitchen on the upper floor, along with a generous roof terrace, three double bedrooms, a large family bathroom and ample storage. Sold chain free.

Very centrally located on Great Guildford Street, in the heart of SE1, this home enjoys a vibrant mix of culture, history and convenience. Moments from the culinary delights of Borough Market, riverside walks along the Southbank, The Globe Theatre and Tate Modern. London Bridge, Borough and Southwark stations are all nearby, with Waterloo just beyond.

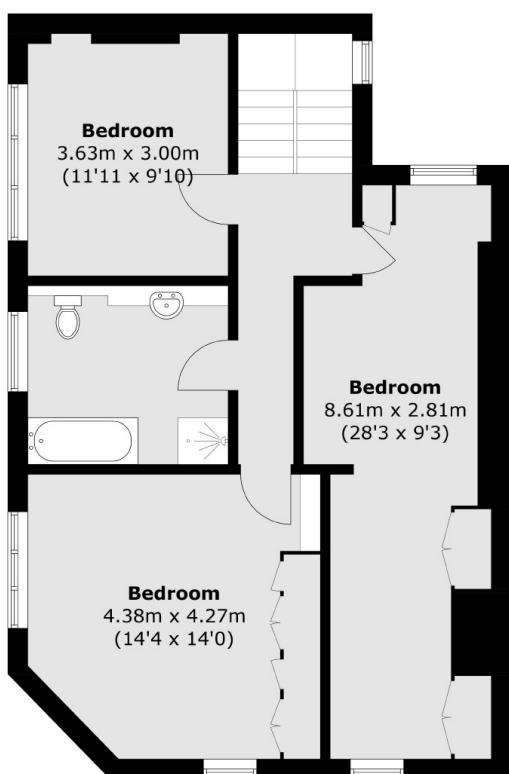
Features

- Over 1,400 Sq Ft
- Penthouse Apartment
- Three Double Bedrooms
- Split Level
- Private Roof Terrace
- Chain Free Sale

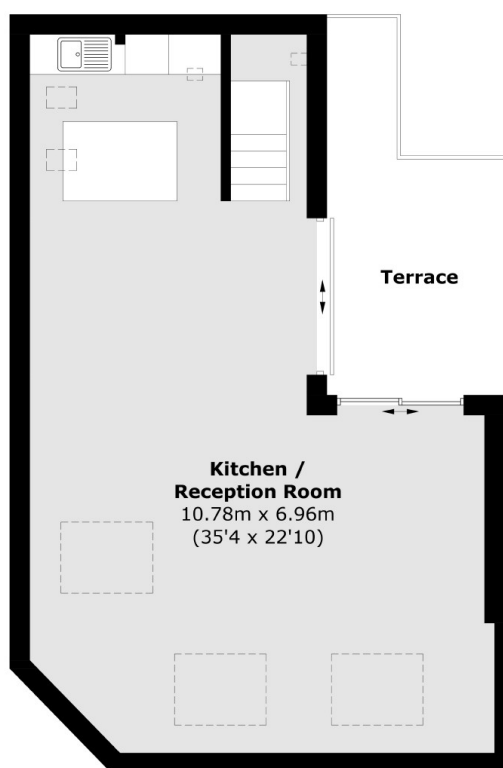
Great Guildford Street, London, SE1



First Floor



Second Floor



Third Floor

Total area (approx.): 132.3 sq. m (1424.1 sq. ft)

Dexters

London Bridge
54 Borough High Street
London
SE1 1XL
Sales
020 7650 5 100

Energy Rating: D. We aim to make our particulars both accurate and reliable. However they are not guaranteed; nor do they form part of an offer or contract. If you require clarification on any points then please contact us, especially if you're traveling some distance to view. Please note that appliances and heating systems have not been tested and therefore no warranties can be given as to their good working order.

 **RICS** | Regulated
Estate Agent
and Letting Agent

dexters.co.uk