



## Bath Terrace, SE1

### £295,000

A highly desirable Victorian Mansion flat, with a spacious open plan kitchen & living room, a generous double bedroom, a three piece bathroom, ample storage, high ceilings & sash windows. Sold chain free, with a very long lease. Offers In Excess Of £295,000

Bath Terrace is under 0.5 miles from Borough underground & Borough High Street & 0.25 miles from Elephant & Castle, next to Newington Gardens. Mercato Metropolitano is just around the corner, with many other amenities nearby.

### Features

Offers In Excess Of £295,000  
Victorian Mansion Flat  
One Double Bedroom  
Open Plan Living  
Sash Windows & High Ceilings  
Very Long Lease - 953 Years  
Chain Free Sale

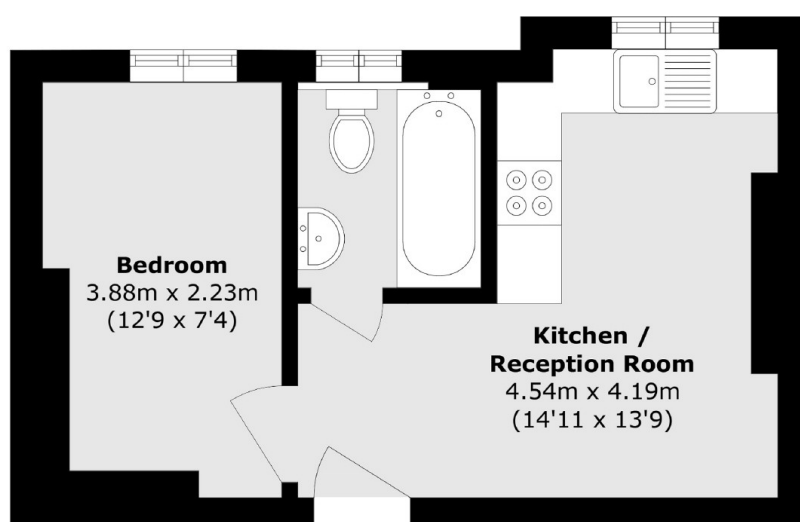




**Bath Terrace, SE1**



# Bath Terrace, London, SE1



Total area (approx.): 27.2 sq. m (292.8 sq. ft)