



Great Suffolk Street, SE1

£1,142 Per week

Newly completed Three bedroom Penthouse split over two floors, features open plan living space with wood flooring throughout and large private roof terrace.

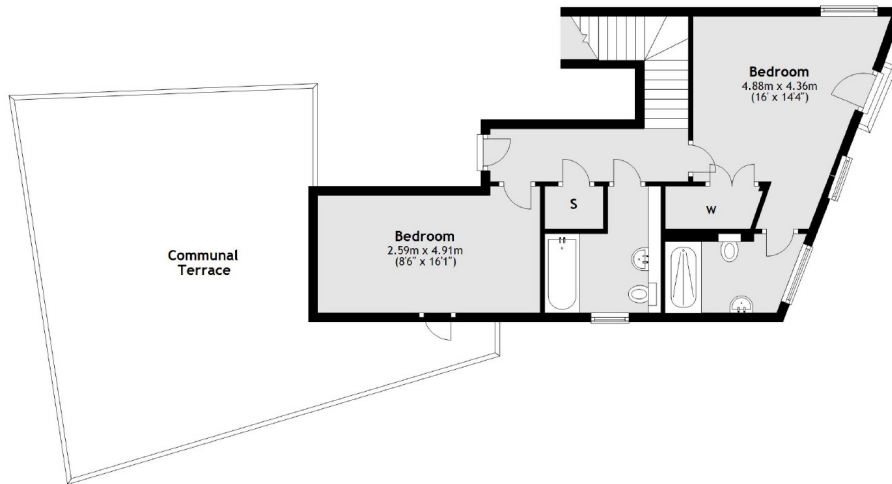
Located on the corner of Borough High Street and Great Suffolk Street it's within 0.2 miles from Borough Station and 0.6 miles from London Bridge Station. Borough Market is located at the top of Borough High Street.

Features

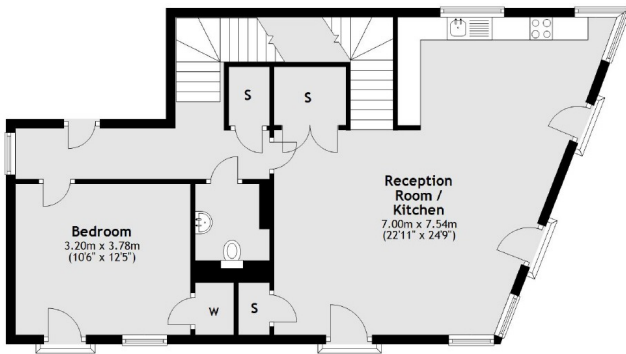
- The Bedrooms
- Two Bathrooms
- Split Level
- Private Terrace
- Communal Roof Terrace

Great Suffolk Street, London, SE1

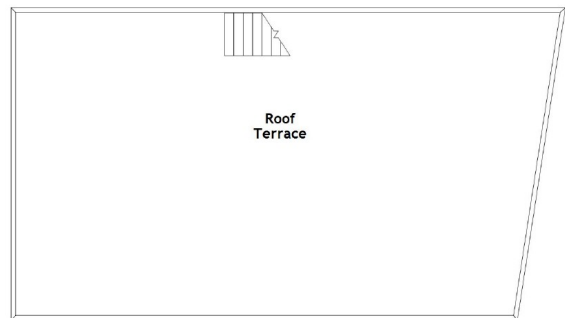
Fifth Floor



Sixth Floor



Seventh Floor



Main area: Approx. 127.0 sq. metres (1367.0 sq. feet)
Plus roof terrace, approx. 76.9 sq. metres (828.3 sq. feet)