



Blackfriars Road, SE1

£875,000

An immaculate, high spec, modern apartment, spread over more than 1,300 sq ft, with a great-sized living room and fully fitted kitchen, private winter garden, two very generous double bedrooms and two bathrooms. Chain free sale.

Located on Blackfriars Road, with numerous amenities in the vicinity on Bankside, a vibrant social scene, boutique restaurants, bars and cafés. There is easy access to Southwark, Blackfriars Station and the City is just a hop over the bridge.

Features

- High Spec Finish
- Two Double Bedrooms
- Two Bathrooms
- Residents' Gym
- 24 Hour Concierge
- Panoramic Residents' Terrace
- Chain Free Sale



Blackfriars Road, SE1

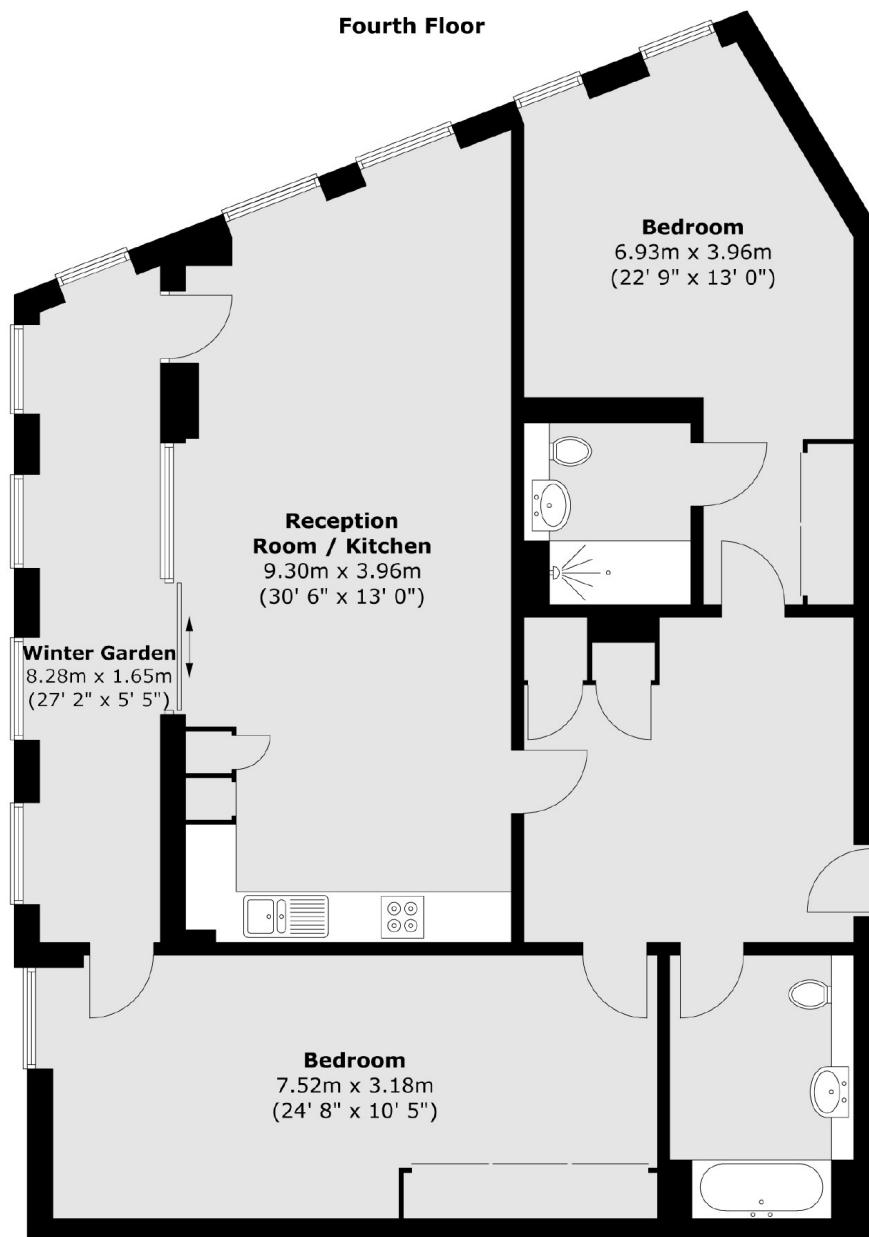
Conquest Tower is one of SE1's premier new developments, finished to a very high specification, with a 24 hour concierge, residents' gym and a panoramic communal roof terrace.

The apartment is unusually spacious with a very entrance hall, two generous double bedrooms, two bathrooms, one of which is en-suite, a sizeable open plan living area and a private winter garden.

There is a great flow to the property and fantastic light due to the floor to ceiling windows, open aspect and fantastic views.



Blackfriars Road, London, SE1



Total area (approx.): 123.1 sq. m (1325 sq. ft)