



Long Lane, SE1

£800,000

A highly attractive modern apartment, with a dual aspect, a large open plan living room and kitchen, a south-facing balcony, two generous double bedrooms, two bathrooms, a separate utility room and ample built-in storage. Chain free Sale.

The Taper Building is set in the heart of SE1, moments away from London Bridge Station. Bermondsey Street, Borough Market and the Southbank are on your doorstep with numerous attractions, cafés, restaurants, galleries and other amenities nearby.

Features

- Dual Aspect
- Two Double Bedrooms
- Two Bathrooms
- Large Open Plan Living Space
- On-Site Concierge
- Residents' Gym
- Private South-Facing Balcony
- Chain Free Sale



Long Lane, SE1

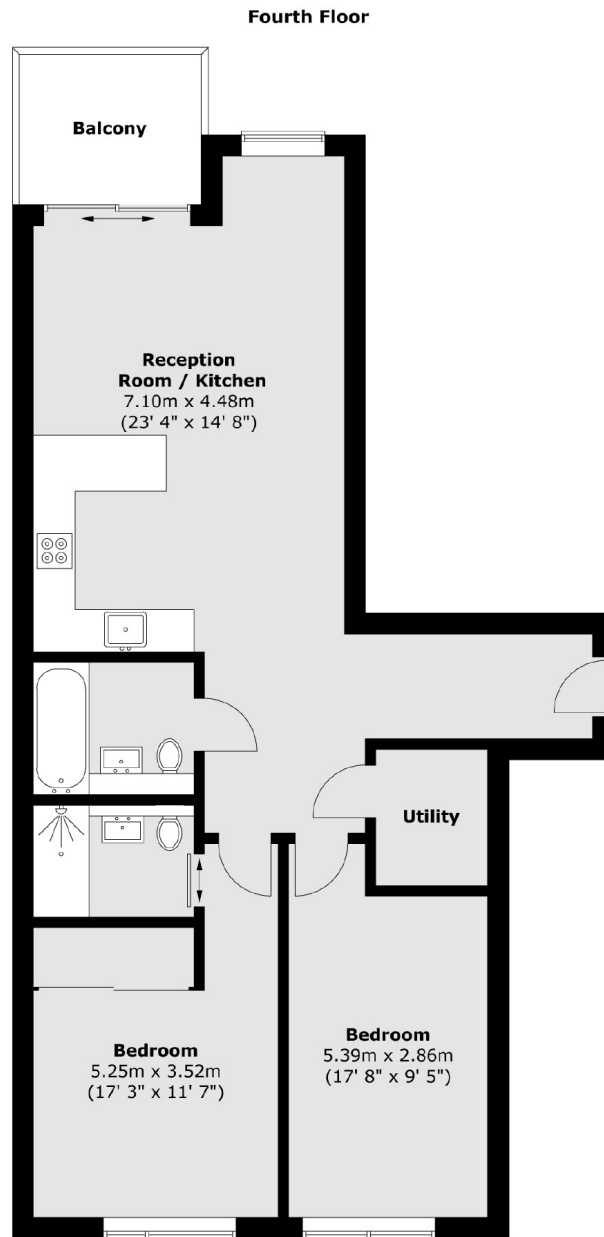
The Taper Building is an award-winning modern development, completed in 2018. The residents benefit from access to an on-site gym, landscaped communal gardens, a large communal roof terrace, with stunning skyline views across the city, secure bicycle storage and a 24-hour concierge.

This apartment is one of the largest two bedroom apartments, one of only a few that benefit from a dual aspect, with both of the bedrooms to the back of the building, overlooking the gardens below, and with a large south-facing living space and balcony.

There is a particularly high spec finish, with underfloor heating throughout, air-conditioning, floor to ceiling windows, a large kitchen, with high quality appliances and a built-in breakfast bar, plus a separate utility room and two stylish bathrooms.



Long Lane, London, SE1



Total area (approx.) : 84.9 sq. m (914 sq. ft)
Total balcony area (approx.) : 5.6 sq. m (60 sq. ft)