



## Bath Terrace, SE1

### £350,000

An extremely well-presented one-bedroom flat, situated on Bath Terrace.

This property has been fully renovated and finished to a stunning standard, featuring a beautifully fitted kitchen, a modern bathroom, and restored original flooring.

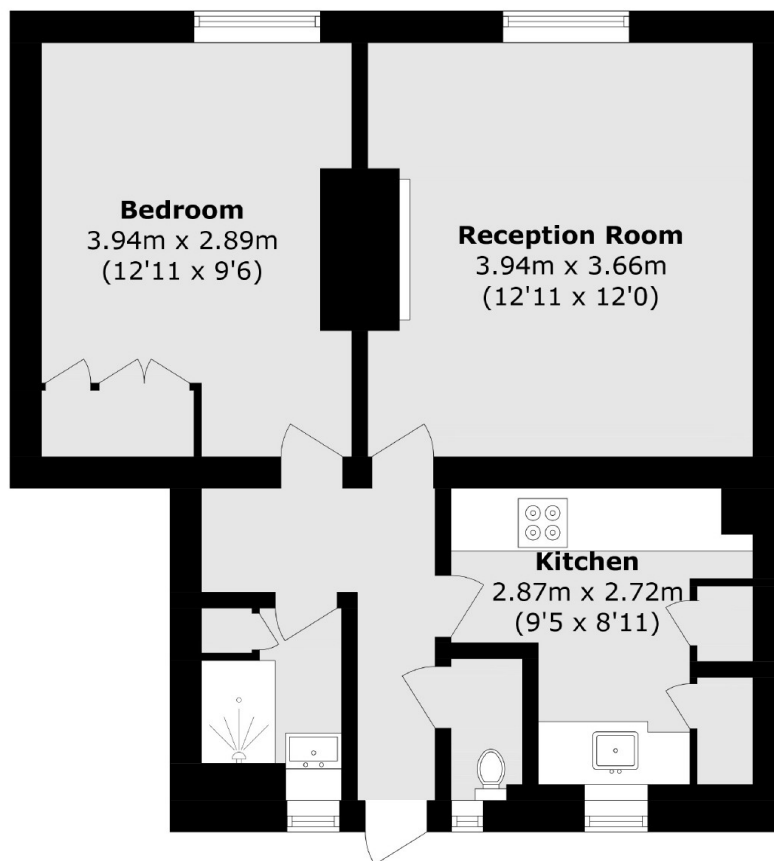
Ideally located just a five-minute walk from Elephant and Castle Tube Station, it also benefits from being set within a quiet neighbourhood surrounded by green space, with both Newington Gardens and Dickens Fields only moments away.

Binnie House is under 0.5 miles from Borough underground & Borough High Street & 0.25 miles from Elephant & Castle, next to Newington Gardens. Mercato Metropolitano is just around the corner, with many other amenities nearby.

### Features

Beautifully finished  
Modern Kitchen and Bathroom  
Fantastic Location  
Close to Tubes  
Separate Kitchen  
Double Glazed Windows

# Bath Terrace, London, SE1



Total area (approx.): 43.7 sq. m (470.3 sq. ft)