



Lant Street, SE1

£465,000

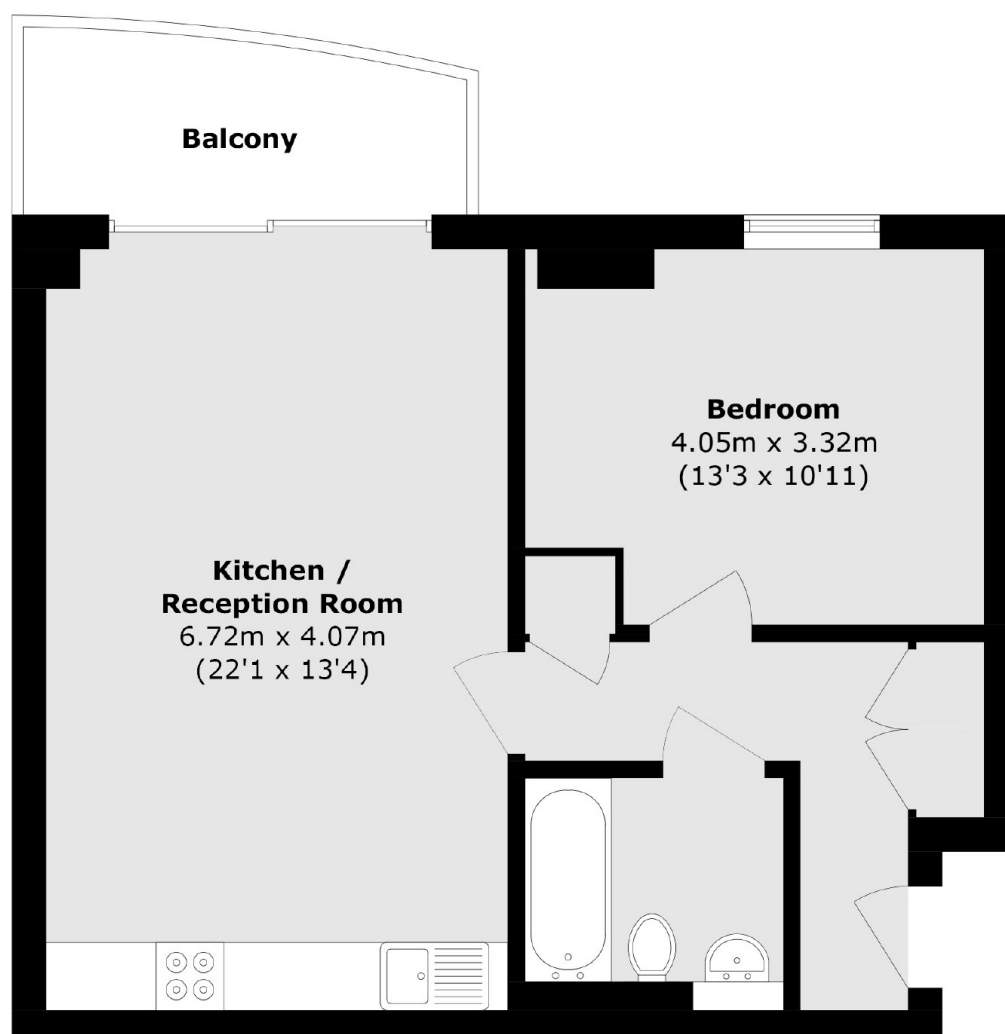
A highly attractive fourth-floor apartment offering modern city living with a generous sense of space and light. The property features a large private balcony with far-reaching views, a stylish open-plan kitchen and living area, and a well-proportioned double bedroom with ample built-in storage. Sold chain free.

The Rise on Lant Street is superbly located, just behind Borough Underground at the foot of Borough High Street. With London Bridge, Borough Market, The Shard, and the South Bank all just moments away, it offers the perfect balance of vibrant city living and excellent connectivity.

Features

- Open Plan Living
- Large Private Balcony
- Very Central Location
- Secure Entry System
- Excellent Transport Links
- Bike Storage
- Chain Free Sale

Lant Street, London, SE1



Total area (approx.): 54.4 sq. m (585.5 sq. ft)

Balcony area (approx.): 5.8 sq. m (62.4 sq. ft)

Dexters

London Bridge
54 Borough High Street
London
SE1 1XL
Sales
020 7650 5 100

Energy Rating: B. We aim to make our particulars both accurate and reliable. However they are not guaranteed; nor do they form part of an offer or contract. If you require clarification on any points then please contact us, especially if you're traveling some distance to view. Please note that appliances and heating systems have not been tested and therefore no warranties can be given as to their good working order.

 **RICS** | Regulated
Estate Agent
and Letting Agent

[dexters.co.uk](https://www.dexters.co.uk)