



Lancaster Street, SE1

£595,000

An immaculately presented, ground floor apartment, spread over in excess of 600 sq ft with a very generous open plan living room and a high spec modern kitchen, leading out onto a west-facing garden, with a spacious double bedroom, three piece bathroom and a separate utility cupboard. This is a chain free sale.

Lumiere Court is very well located, on Lancaster Street, tucked back off Blackfriars Road, perfectly situated for a multitude of food markets and transport links including Waterloo, Southwark & London Bridge. It is a real entertainment & cultural hub.

Features

- High Specification
- Under Floor Heating
- Open Plan Living
- Private Terraced Garden
- Secure Entry & Bike Storage
- Long Lease
- Valid EWS1 Form



Lancaster Street, SE1

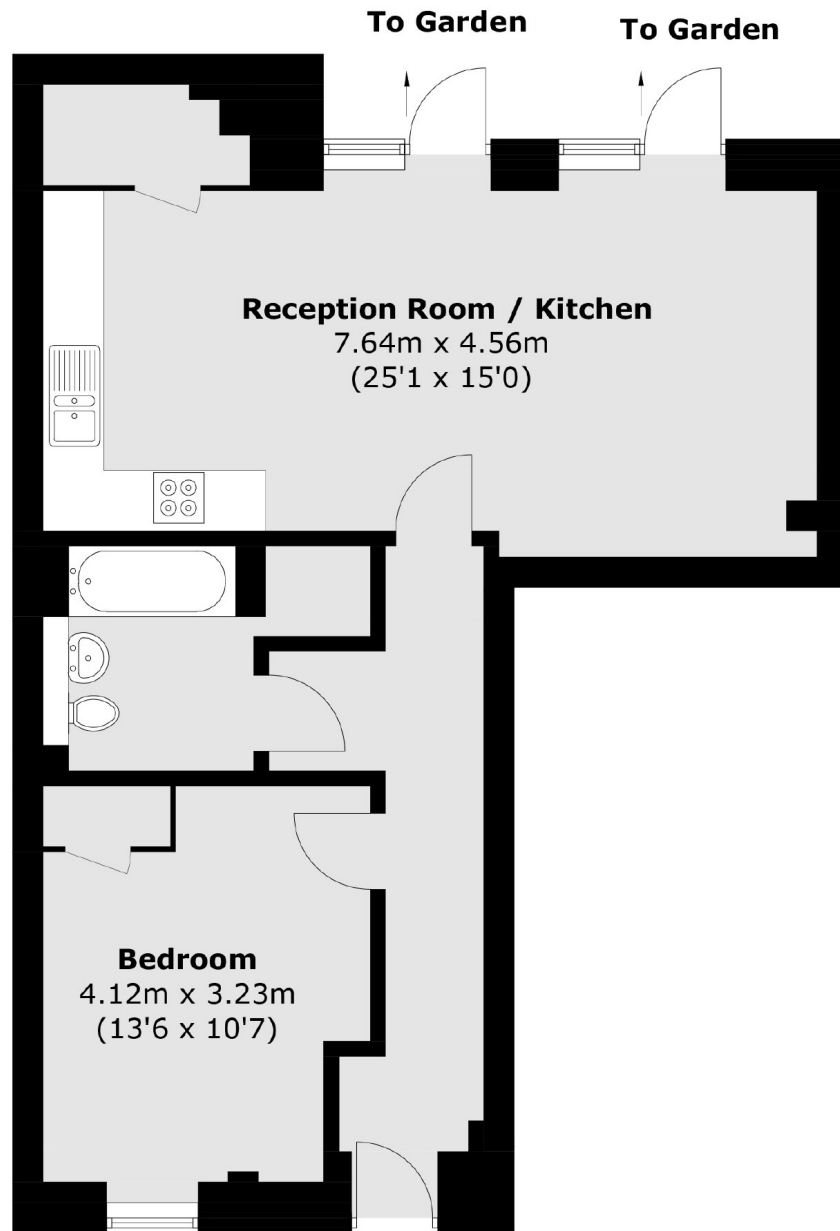
The apartment is very thoughtfully designed, with a contemporary feel, high quality fully fixtures & fittings, an integrated sound system, Quartz Caestone work surfaces, under floor heating and floor to ceiling windows.

The bedroom benefits from a large walk-in wardrobe with ample hanging space and shelving. Alongside the three piece bathroom, there is a separate utility cupboard and great additional storage.

Completed in January 2016, the development is well-maintained and each apartment benefits from a long lease of 999 years from new. It is a small scale development with secure entry, bike storage and a genuine community feel.



Lancaster Street, London, SE1



Total area (approx.): 57.9 sq. m (623.2 sq. ft)