



## Graduate Place, SE1

### £1,250,000

A rare freehold house arranged over five floors with off-street parking, and private roof terrace. The property offers a spacious reception room, modern kitchen/dining area, five bedrooms and four bathrooms, providing flexible living for families or sharers.

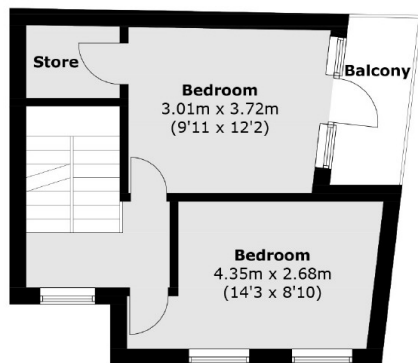
Wilds Rent is a quiet street moments from Borough Market, Bermondsey Street and London Bridge, with excellent transport links via London Bridge Station and Borough Underground.

Situated moments away from Borough Market, Bermondsey Street, the South Bank and London Bridge. London Bridge Station (Northern, Jubilee and National Rail) and Borough Underground (Northern Line) are both within easy walking distance, providing direct access to the City, Canary Wharf and the West End.

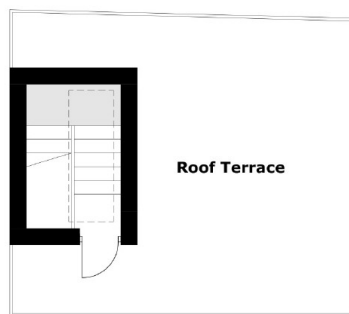
### Features

- Freehold House
- Five Bedrooms
- Private Roof Terrace
- Off-street Parking
- Chain Free
- Central Location

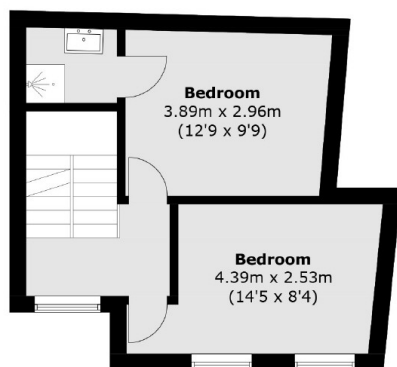
# Graduate Place, London, SE1



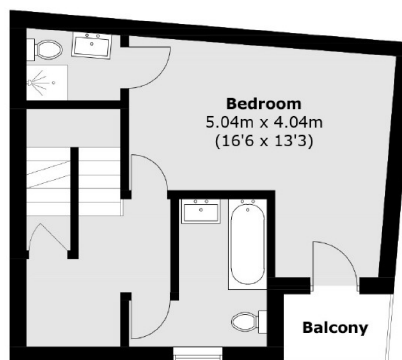
**Third Floor**



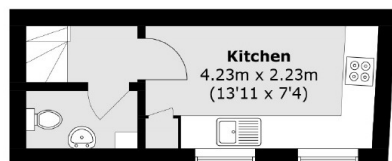
**Fourth Floor**



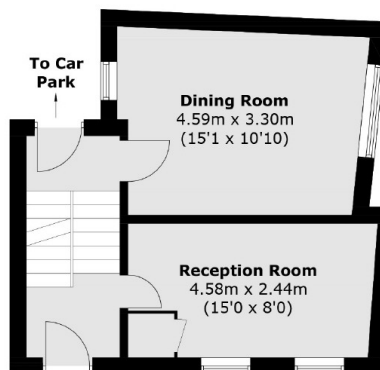
**First Floor**



**Second Floor**



**Lower Ground Floor**



**Ground Floor**

Total area (approx.): 150.5 sq. m (1619.9 sq. ft)  
Roof Terrace / Balcony: 32.5 sq. m (349.8 sq. ft)

## Dexters

London Bridge  
54 Borough High Street  
London  
SE1 1XL  
Sales  
020 7650 5 100

Energy Rating: . We aim to make our particulars both accurate and reliable. However they are not guaranteed; nor do they form part of an offer or contract. If you require clarification on any points then please contact us, especially if you're traveling some distance to view. Please note that appliances and heating systems have not been tested and therefore no warranties can be given as to their good working order.

**RICS** | Regulated  
Estate Agent  
and Letting Agent

dexters.co.uk