

Lant Street, SE1

£465,000

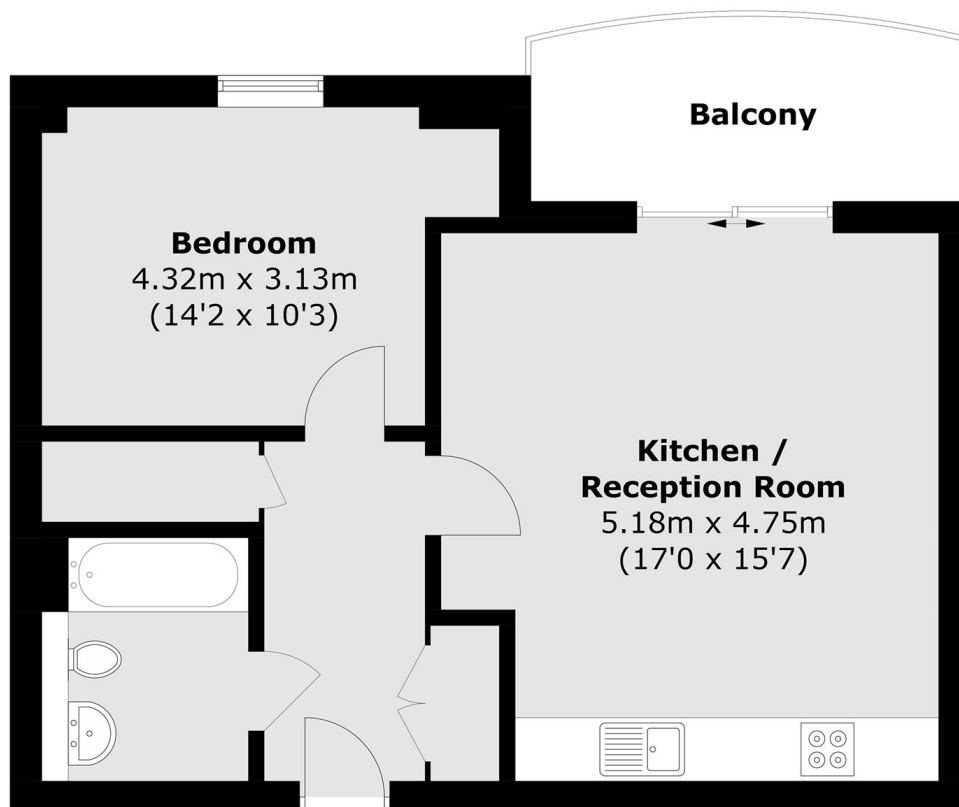
A beautifully appointed top-floor apartment offering a rare sense of space and privacy, enhanced by high ceilings and a large private balcony with attractive skyline views of the Shard. The refined open-plan kitchen and living area is ideal for both entertaining and everyday living, complemented by a generous double bedroom and extensive built-in storage.

The Rise on Lant Street is superbly located, discreetly tucked behind Borough Underground at the foot of Borough High Street. Step outside to the buzz of Borough Market, historic coaching inns, independent cafés and late-night wine bars, with London Bridge, the Shard and the riverside walks of the South Bank all just moments away.

Features

- Top Floor Flat
- High Ceilings
- Large Private Balcony
- Views of the Shard
- Chain Free Sale
- Secure Off-Street Parking

Lant Street,
London, SE1



Total area (approx.): 49.4 sq. m (531.7 sq. ft)
Balcony area (approx.): 6.8 sq. m (73.2 sq. ft)