



## Elim Estate, SE1

£340,000

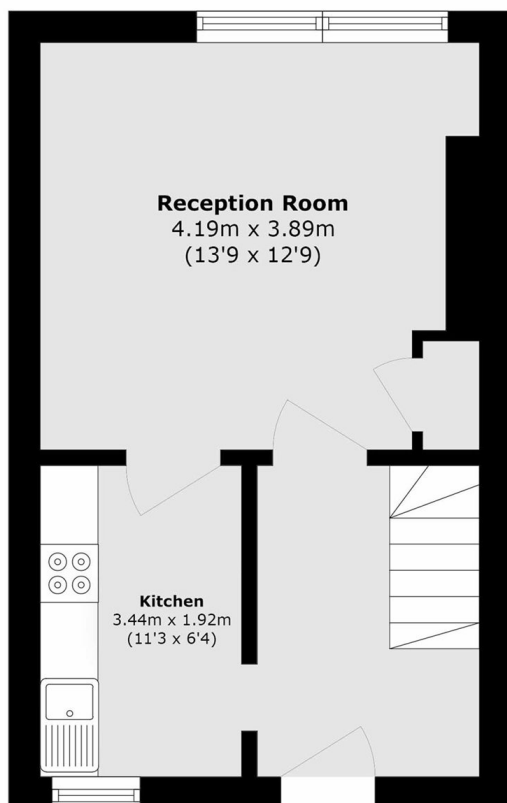
Offers in excess of £340,000. A highly attractive duplex apartment with a desirable southerly aspect, offering bright and well-proportioned accommodation. The property features a spacious living room, a separate kitchen, a generous double bedroom, and a modern three-piece bathroom. Offered for sale chain-free, making it an ideal opportunity for both first-time buyers and investors.

Weston Street is enviably located in the heart of SE1, moments away from the vibrant Bermondsey Street, London Bridge Station, the Shard and Borough Market, with excellent links across the City and numerous attractions on your doorstep.

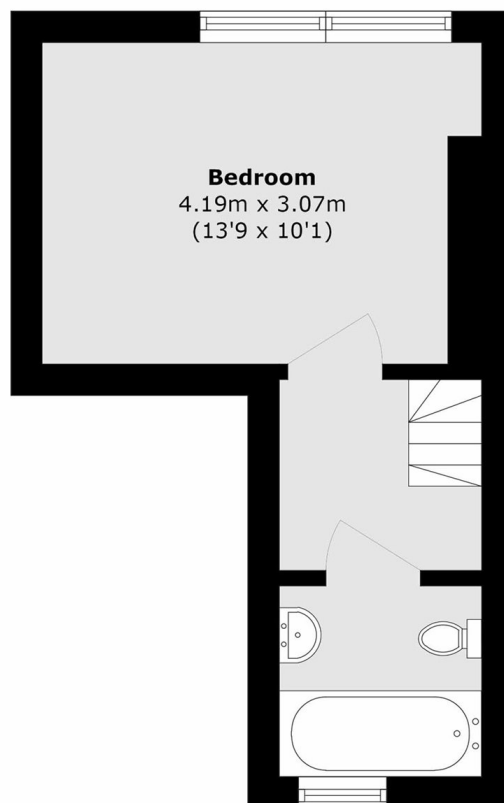
### Features

Offers in excess of £340,000  
Duplex Apartment  
Separate Kitchen & Living Room  
One Double Bedroom  
Southerly Aspect  
Secure Entry  
Chain Free Sale

# Elim Estate, London, SE1



**Second Floor**



**Third Floor**

Total area (approx.): 51.5 sq. m (554.3 sq. ft)