



Great Dover Street, SE1 £400,000

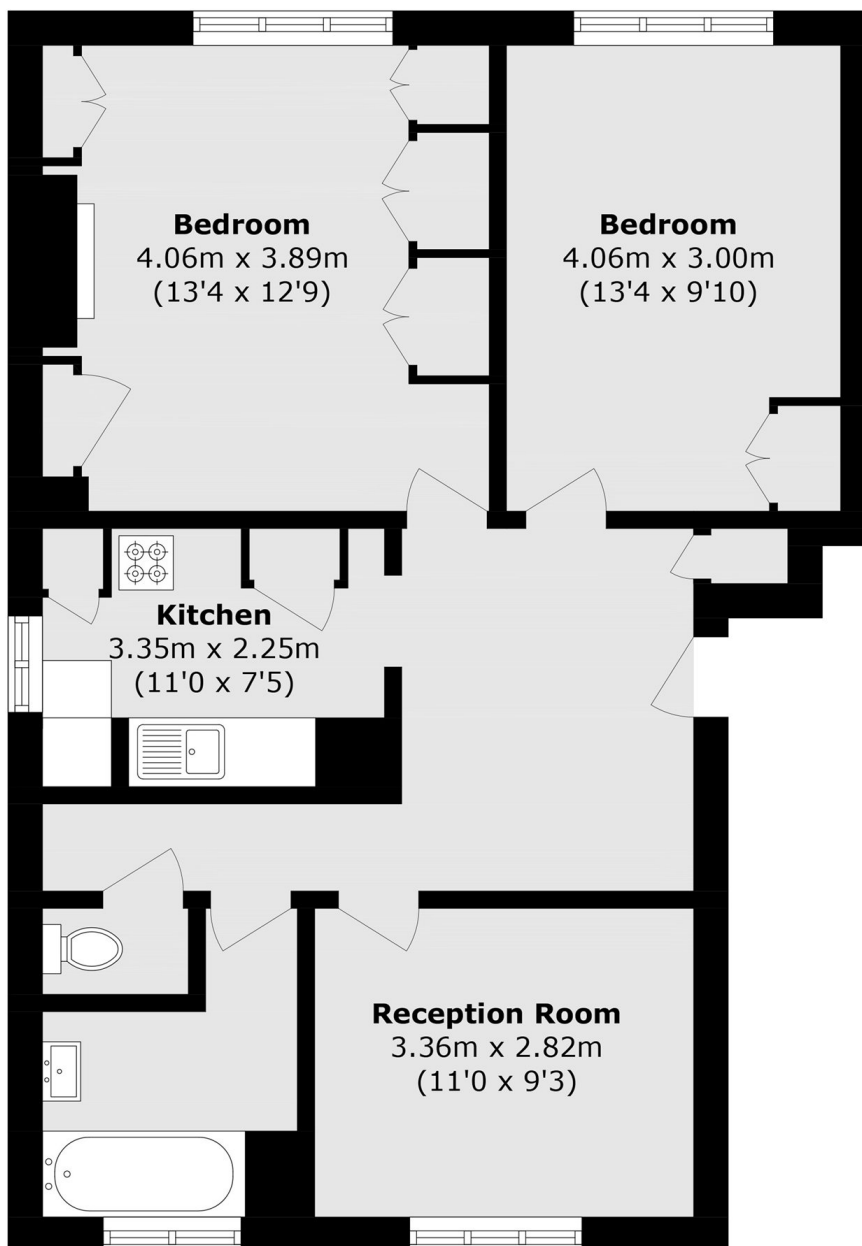
A highly attractive second-floor flat with a sunny triple-aspect and a spacious, well-designed layout. The property features a substantial entrance hallway leading to a large south-facing living room and a separate fully fitted kitchen. There are two generously sized double bedrooms, along with bathroom and a separate WC. Residents also benefit from permit parking. Offers in Excess of £400,000

Selbourne House is enviably located, adjacent to the open green space of Tabard Gardens, a short distance from London Bridge and Borough Stations, the South Bank, Borough Market and the Shard. There are numerous amenities and attractions on your doorstep in one of London's most eclectic neighbourhoods.

Features

Second Floor Flat
Triple Aspect
Large Living Room
Separate Kitchen
Two Double Bedrooms
Permit Parking
Offers in Excess of £400,000

Great Dover Street, London, SE1



Total area (approx.): 63.6 sq. m (684.5 sq. ft)