



Green Walk, SE1

£450,000

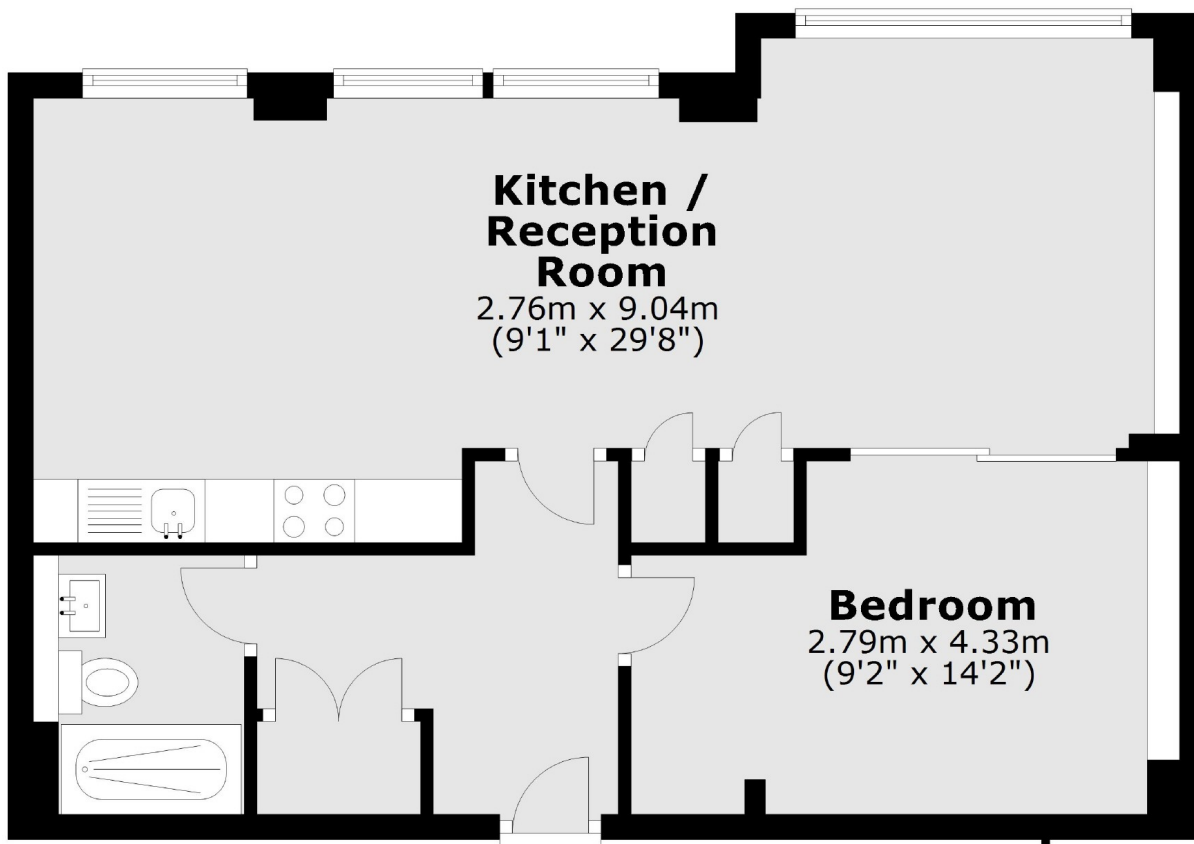
An exceptional warehouse conversion, beautifully presented and brimming with character, featuring high ceilings, large windows, and a premium finish throughout. The large open-plan living and kitchen area offers a stylish and versatile space, complemented by a generous double bedroom and a sleek three-piece bathroom. Offered chain free.

The Jam Factory is ideally located just 0.8 miles from both London Bridge and Bermondsey stations, with the vibrant cafés, delis, shops, and restaurants of Bermondsey Street only 0.2 miles away. This sought-after neighbourhood blends historic charm with a lively food and arts scene, placing Borough Market, Maltby Street Market, and the cultural attractions of the South Bank all within easy reach.

Features

- Chain Free Sale
- Warehouse Conversion
- Large Sash Windows
- Exposed Brickwork
- Residents' Porter
- Valid EWS1 Form in Place

Green Walk, London, SE1



Total area: approx. 52.7 sq. metres (567.0 sq. feet)