



Old Kent Road, SE1 £230,000

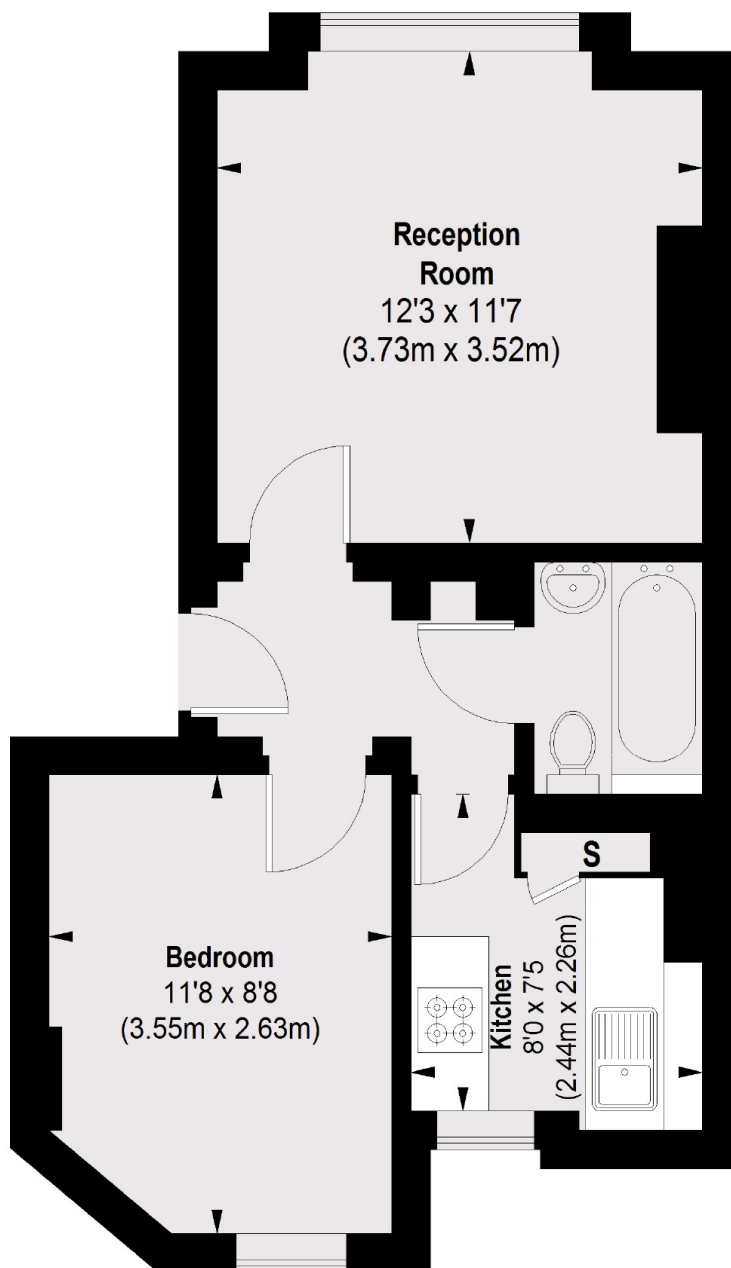
An attractive Victorian Mansion Flat, with a separate kitchen and a large living room, sash windows, a double bedroom at the back of the building and a three piece bathroom. This is a chain free sale, ideal for a first time buyer or an investor. Offers in excess of £230,000.

Close by to both Borough and Elephant & Castle Stations (Zone 1) with access to the Northern Line & Bakerloo Line. There are also great bus routes into Central London and numerous amenities on your doorstep.

Features

- Offers in excess of £230,000
- Victorian Mansion Flat
- Secure Entry
- Double Glazing
- One Double Bedroom
- Separate Kitchen & Living Room
- Excellent Transport Links
- Chain Free Sale

Old Kent Road, London, SE1



UPPER GROUND FLOOR

TOTAL APPROX. FLOOR AREA = 389 SQ. FT. (36.11 SQ. M.)

Dexters

London Bridge
54 Borough High Street
London
SE1 1XL
Sales
020 7650 5100

Energy Rating: . We aim to make our particulars both accurate and reliable. However they are not guaranteed; nor do they form part of an offer or contract. If you require clarification on any points then please contact us, especially if you're traveling some distance to view. Please note that appliances and heating systems have not been tested and therefore no warranties can be given as to their good working order.

 **RICS** Regulated
Estate Agent
and Letting Agent

dexters.co.uk