



Dolben Street, SE1

£1,000,000

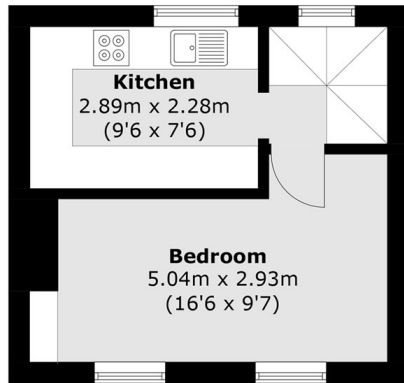
A rare opportunity to acquire a four-storey Victorian freehold house in the heart of SE1, with planning granted for further loft extension and the addition of a roof terrace. The property features three well-proportioned double bedrooms, a spacious reception room, a fully fitted modern kitchen, a contemporary three-piece bathroom, and an additional WC.

Dolben Street is enviably positioned just off Great Suffolk Street, moments from the South Bank & c300 yards from the Tate Modern, whilst within easy reach of Southwark, London Bridge, Blackfriars and Waterloo stations. The area offers an array of attractions right on your doorstep, including artisan cafés, boutique restaurants, renowned theatres, Borough Market, Lower Marsh and The Cut.

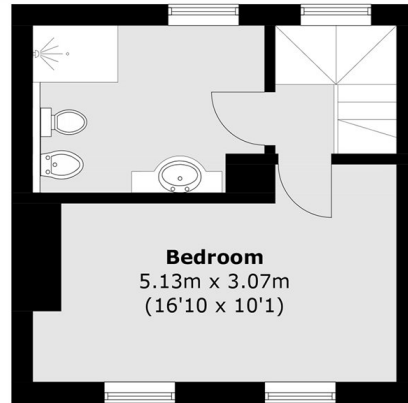
Features

- Victorian Freehold House
- Planning Permission Granted
- Four Storeys
- Three Double Bedrooms
- Separate Kitchen & Reception
- Very Centrally Located
- Chain Free Sale

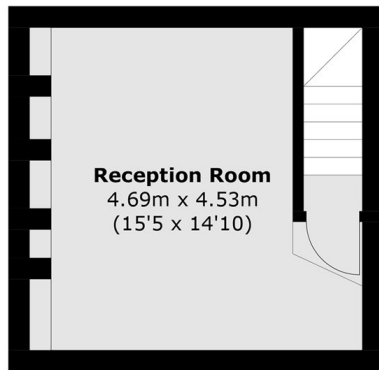
Dolben Street,
London, SE1



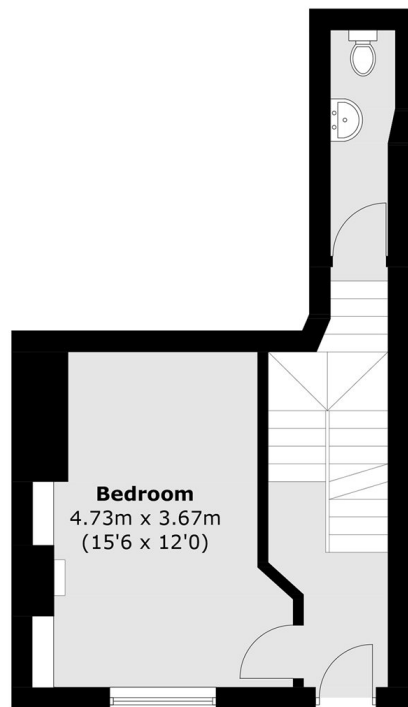
First Floor



Second Floor



Basement Floor



Ground Floor

Total area (approx.): 98.6 sq. m (1,061.4 sq. ft)
(Including Basement)