



Vauxhall Grove, SW8

£1,200,000

Dexters



Vauxhall Grove, London, SW8

Formally the local areas sweet shop this 1000 sq ft (approx.) home is arranged over four floors with a flexible layout.

On the ground floor there is an impressive open plan reception room with fitted kitchen and stairs leading up onto both the upper and lower floors.

Each of the upper levels has a well proportioned double bedroom and bathroom.

The lower ground floor is currently being used as a self-contained studio flat and is being let out. This could off course also form part of the main property dependent on ones needs.

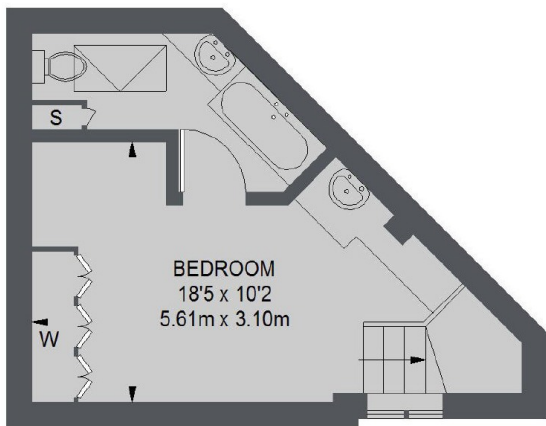
Vauxhall Grove is located in a desirable residential area close to local favourites Italo delicatessen and Bonnington Square cafe.

Features

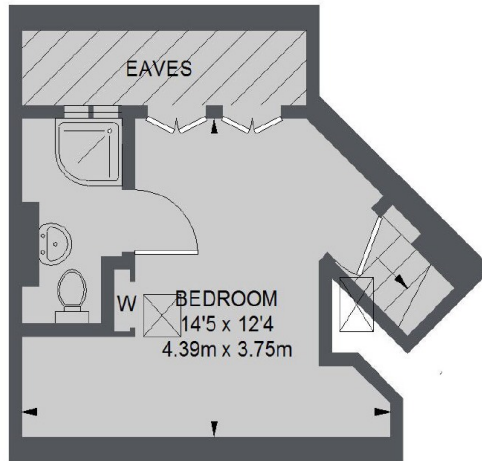
Open Plan Reception
Three Bedrooms
Three Bathrooms
Good Condition
Self-Contained Studio
No Chain



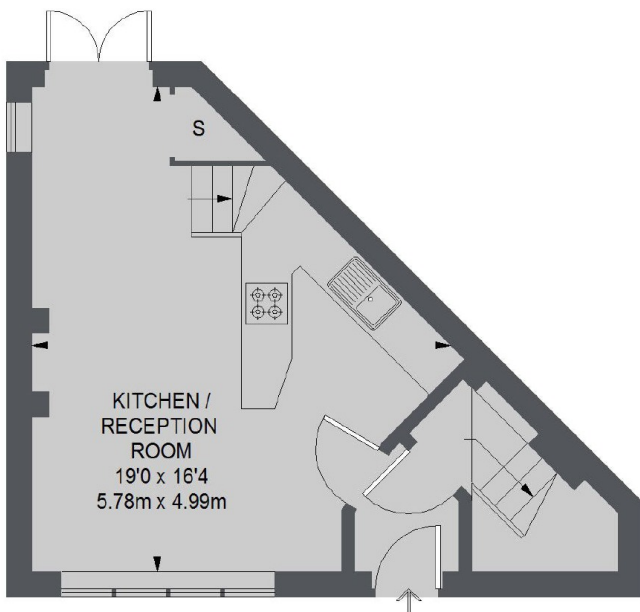
Vauxhall Grove,
London, SW8



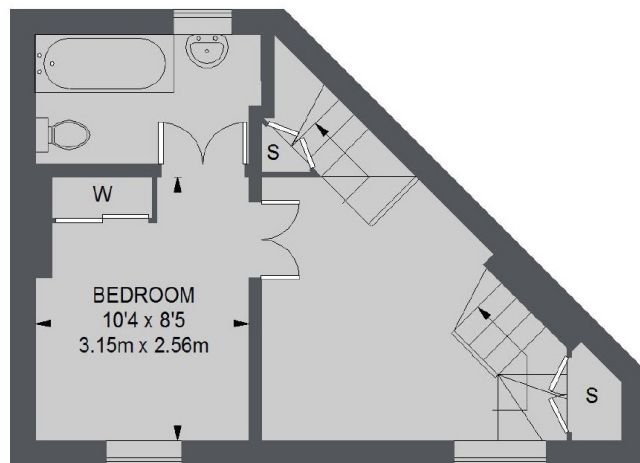
LOWER GROUND FLOOR



SECOND FLOOR



GROUND FLOOR



FIRST FLOOR

TOTAL APPROX. FLOOR AREA (EXCLUDING EAVES) 948 SQ. FT. (88.09 SQ. M.)