



St. George Wharf, SW8

£1,650,000

A fabulous 14th floor two double bedroom apartment flooded with natural light and amazing views upstream with the Iconic Battersea Power Station and the American Embassy. Sold with no onward chain.

The Tower is located on the banks of the Thames. Benefitting from unbeatable transport links being just moments from Vauxhall station (Victoria line) tube and National Rail. There is also a River taxi service from St George Wharf Pier with great access to the city and beyond.

Features

- High Spec Apartment
- Excellent Viewings
- 24 Concierge
- No Onward Chain
- Two Bathrooms
- Many Facilities



St. George Wharf, SW8

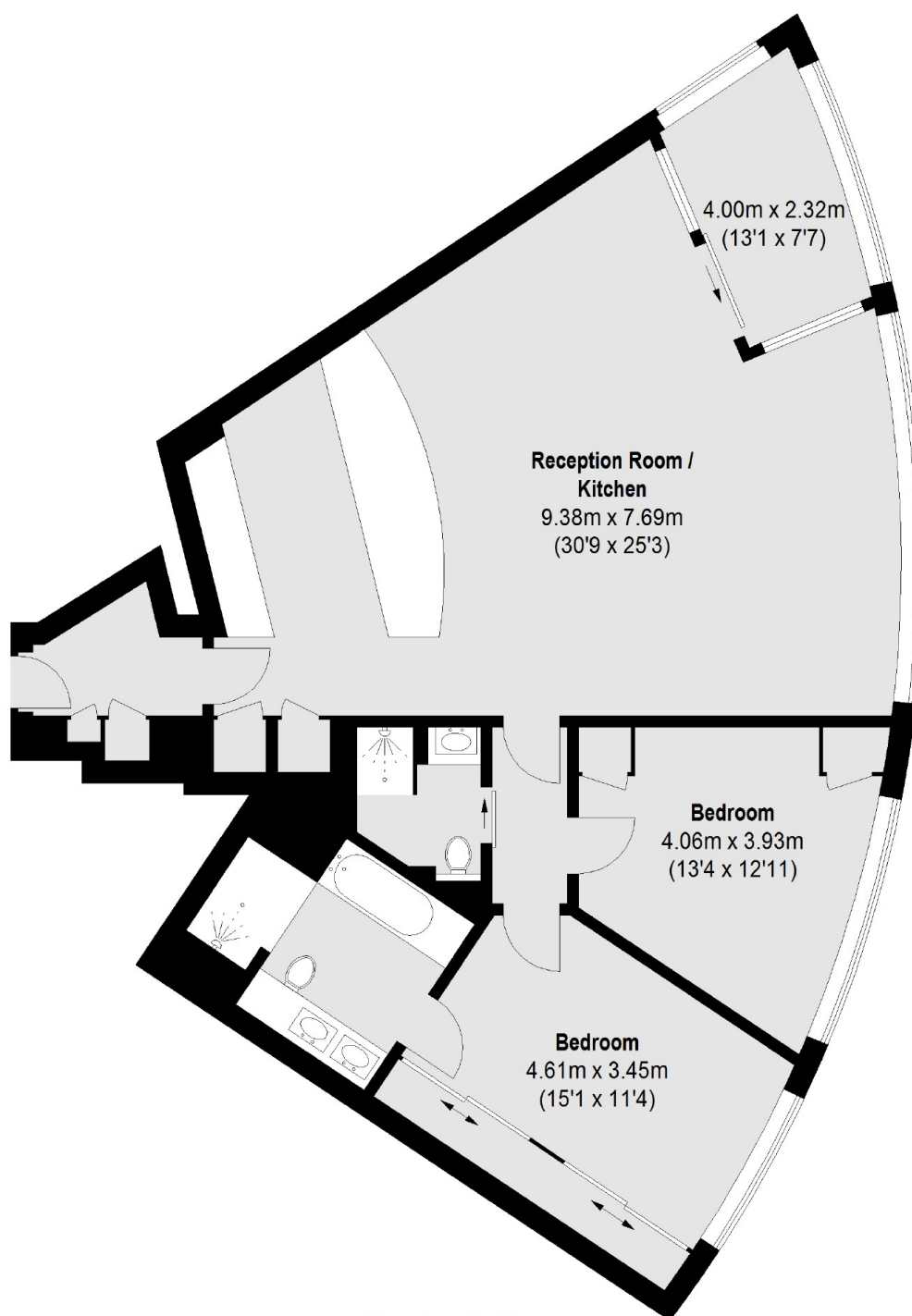
This sought after riverside flat has an open plan high specification fitted kitchen which combines brilliantly with the spacious living room and winter garden to create a fabulous space to relax or entertain guests. There is a large principle bedroom with built in wardrobes an en-suite bathroom, a further double bedroom and a modern family bathroom.

There are floor to ceiling windows throughout the apartment, great storage and an inbuilt control panel to control the lighting, the blinds and air conditioning system.

The apartment benefits from a a first class 24 hour concierge service and valet parking, The Tower has a gym with views of the river, a luxury spa area with a pool also with river views and a sauna and steam room. Furthermore there is a cinema room and conference facilities .



St. George Wharf, London, SW8



Fourteenth Floor

Total area (approx.): 111.0 sq. m (1195 Sq. ft)

Dexters

Kennington
323 Kennington Road
London
SE11 4QE
Sales
0207 650 5102

Energy Rating: . We aim to make our particulars both accurate and reliable. However they are not guaranteed; nor do they form part of an offer or contract. If you require clarification on any points then please contact us, especially if you're traveling some distance to view. Please note that appliances and heating systems have not been tested and therefore no warranties can be given as to their good working order.

 **RICS** | Regulated
Estate Agent
and Letting Agent

dexters.co.uk