



St. George Wharf, SW8

£3,000 Per calendar month

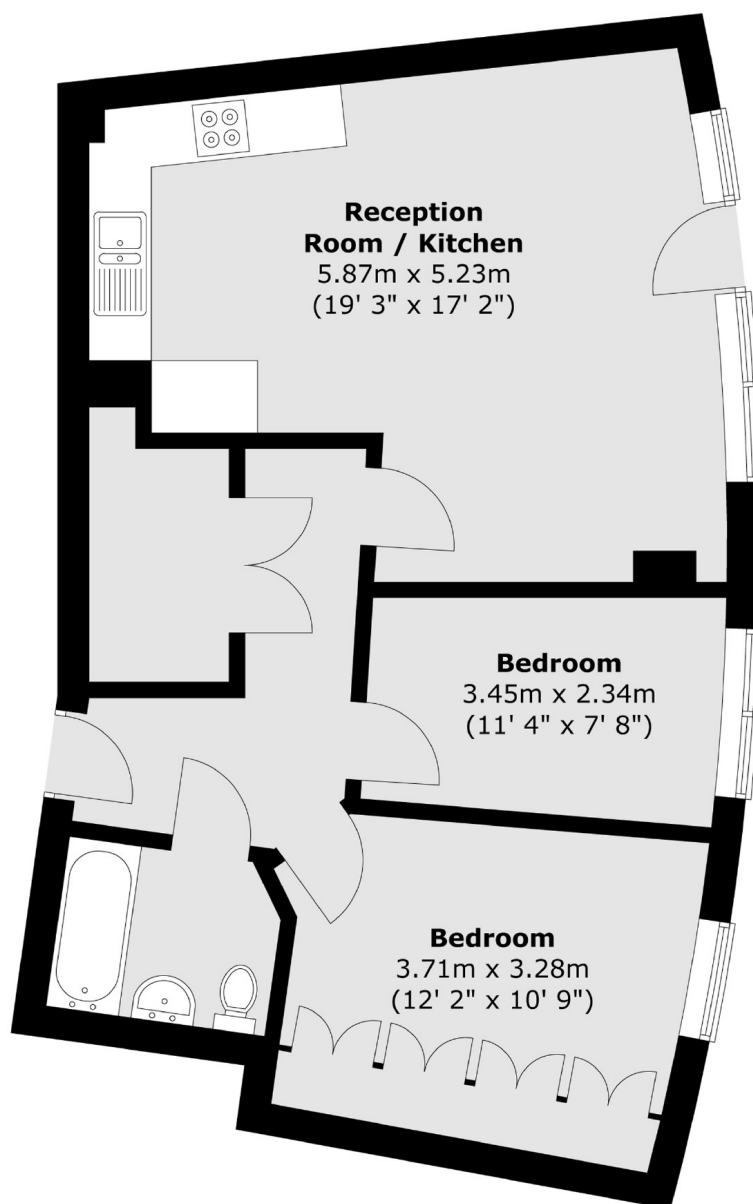
A well-presented two-bedroom apartment in the popular St George Wharf development, offering modern interiors and stunning views of the City skyline. Features include an open-plan living space, sleek kitchen, a family bathroom and floor-to-ceiling windows.

Ideally located just moments from Vauxhall Tube and Train stations, with 24-hour concierge and a variety of cafés and restaurants nearby.

Features

- Two Bedrooms
- One Bathroom
- City Skyline Views
- Good Location
- Close To Station
- Great Condition

St. George Wharf, London, SW8



Total area (approx.) : 61.8 sq. m (665 sq. ft)