



Bermondsey Wall West, SE16

£715 Per week

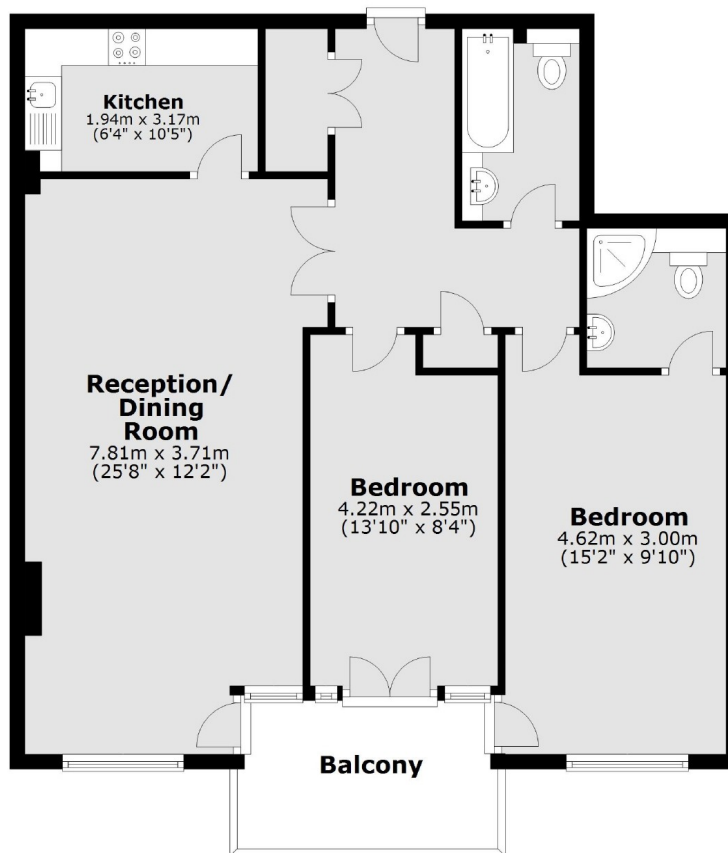
A well-present two double bedroom, two bathroom property located on the banks of River Thames. This apartment offers uninterrupted views of the water and Tower Bridge, along with a separate kitchen and private balcony.

Situated on Bermondsey Wall West less than half a mile from Bermondsey tube station and 0.7 miles to London Bridge station. A selection of bars and restaurants are located along the river only 400m away from the development.

Features

- Two Double Bedrooms
- Two Bathrooms
- Balcony
- Concierge
- Direct River View
- Separate Kitchen
- Shad Thames

Bermondsey Wall West, London, SE16



Main area: Approx. 84.9 sq. metres (913.8 sq. feet)
Plus balconies, approx. 7.5 sq. metres (80.4 sq. feet)