



## Duchess Walk, SE1

£4,300 Per calendar month

A stunning two double bedroom, never before rented apartment situated in Tudor House at One Tower Bridge. Furnished to the highest of standards with a large balcony extending over the gardens, this property would be perfect for professional sharers or couple working in the city.

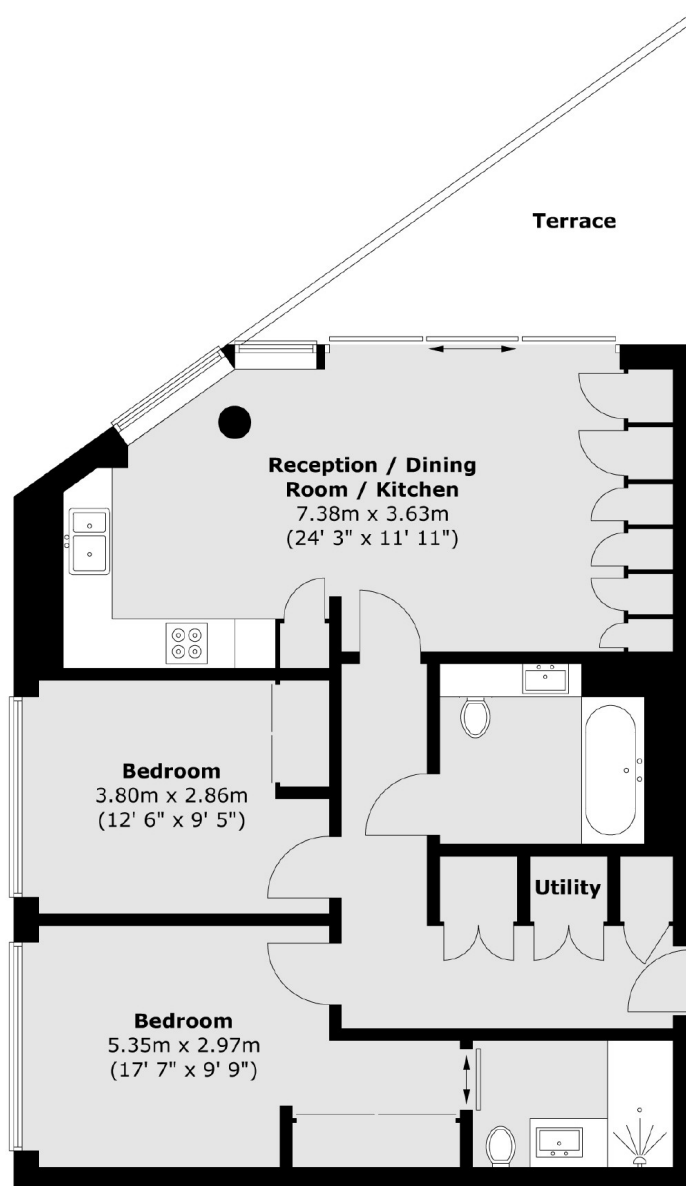
Ridge sits on the banks of the River Thames, and is considered one of the most sought after developments in London. London Bridge, Tower Hill and Tower Gateway are all within walking distance.

### Features

- Two Double Bedrooms
- Two Bathrooms
- Furnished
- Large Balcony
- Gym
- Concierge

# Duchess Walk, London, SE1

## Fifth Floor



Total area (approx.) : 75.4 sq. m (812 sq. ft)  
Total terrace area (approx.) : 9 sq. m (97 sq. ft)

# Dexters

Tower Bridge  
50 Shad Thames  
London  
SE1 2LY  
Lettings  
0207 650 5105

Energy Rating: B. We aim to make our particulars both accurate and reliable. However they are not guaranteed; nor do they form part of an offer or contract. If you require clarification on any points then please contact us, especially if you're traveling some distance to view. Please note that appliances and heating systems have not been tested and therefore no warranties can be given as to their good working order.

 **RICS** | Regulated  
Estate Agent  
and Letting Agent

[dexters.co.uk](https://www.dexters.co.uk)