



Shad Thames, SE1

£899,995

Offering views of the river and Tower Bridge, this split level apartment is in fantastic condition and boasts two large double bedrooms, two bathrooms, open plan kitchen living space, private balcony and secure allocated parking.

The development is located in the heart of Shad Thames and is surrounded by a wide range of restaurants and shops. London Bridge station is just 0.3 miles away.

Features

- Two Double Bedrooms
- Split Level Apartment
- Chain Free
- Private Balcony
- Allocated Parking Space
- Riverside Location



Shad Thames, SE1

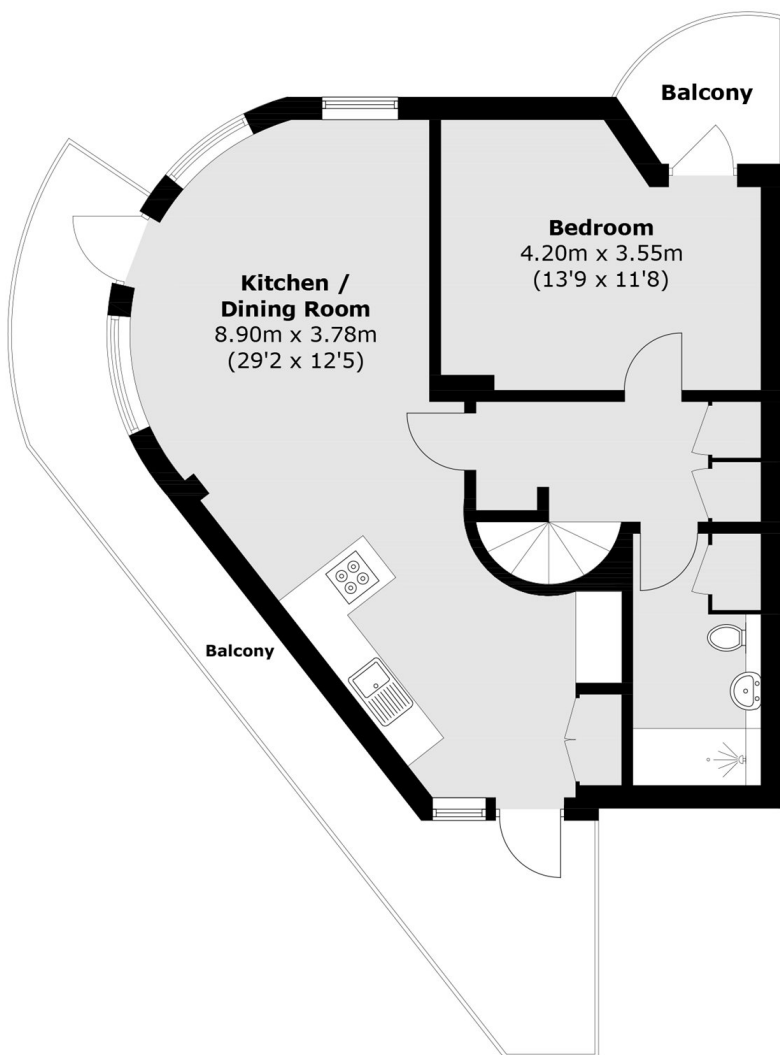
Spread across two floors and situated in the heart of Shad Thames, the flat boasts ample entertaining space along with a large private balcony.

Both bedrooms are large doubles with the master offering an en-suite bathroom and there is an additional family bathroom in the flat along with ample storage space.

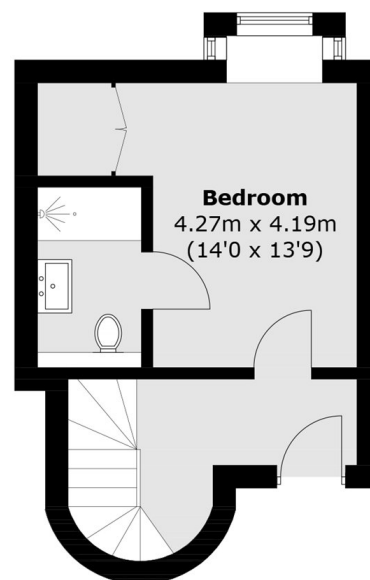
Compass Court is an extremely desirable development located in prime Shad Thames. The development offers porter facilities as well as allocated parking.



Shad Thames, London, SE1



First Floor



Second Floor

Total area (approx.): 83.9 sq. m (903.0 sq. ft)
Balcony: 21.7 sq. m (233.5 sq. ft)