

# WORONZOW ROAD

ST. JOHN'S WOOD NW8

A beautifully presented semi-detached period house which, having undergone a complete programme of redevelopment, now offers a striking contemporary interior with a newly created lower ground floor.



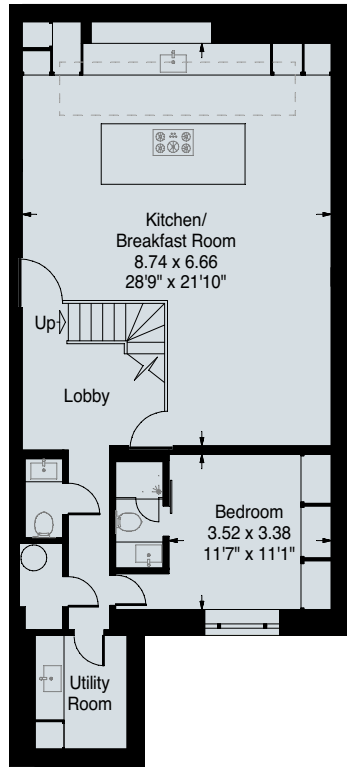
The house, which provides 2,724 sq ft/253.1 sq m of accommodation, has an impressive feature staircase running through the centre of the house, bright open plan ground floor reception spaces leading onto a rear patio and a large lower floor kitchen/entertaining area. Additional features include Lutron lighting, Sonos music system and underfloor heating.



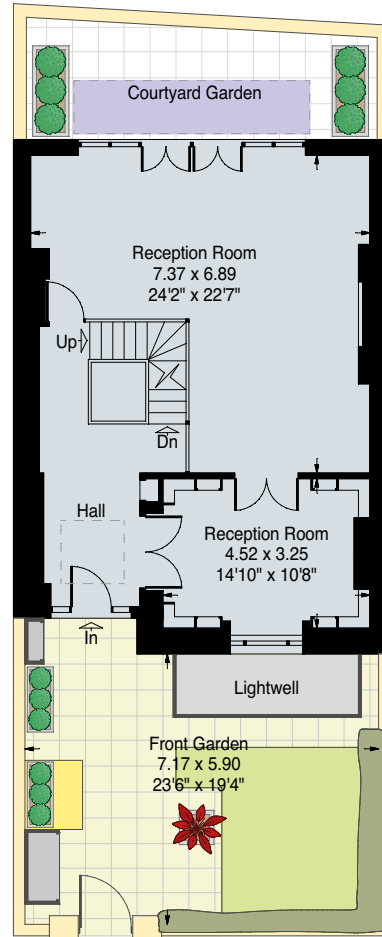
Woronzow Road is a quiet and highly sought after street on the East side of St John's Wood within a few minutes walk of St John's Wood High Street and a short distance from Regent's Park.







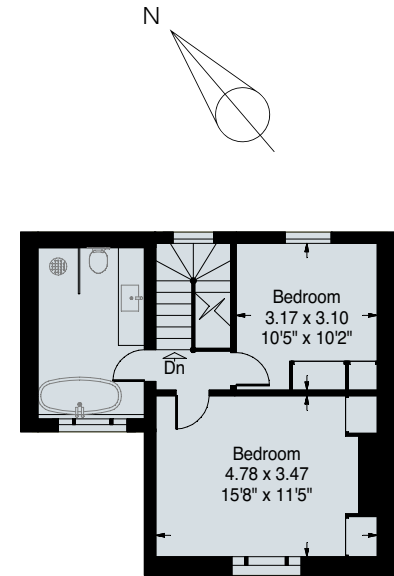
BASEMENT FLOOR



GROUND FLOOR



FIRST FLOOR



SECOND FLOOR

APPROXIMATE GROSS INTERNAL AREA  
253.1 SQ.MTS. / 2,724 SQ.FT.

Images used depict house as previously furnished.  
Guide Price: £3,950,000  
Freehold

**Misrepresentation Act 1967.** This brochure and the descriptions and measurements herein do not constitute representation and whilst every effort has been made to ensure accuracy, this cannot be guaranteed.