

SPRINGFIELD ROAD

ST JOHN'S WOOD LONDON NW8



A DETACHED THREE STOREY HOUSE PROVIDING 4,136 SQ FT/ 384 SQ M OF ACCOMMODATION AND PRESENTED IN GOOD DECORATIVE CONDITION THROUGHOUT.

The house, which features elegant and well-proportioned rooms, benefits from a beautiful rear garden, as well as landscaped gardens to the front. In addition to gated off-street parking, there is a single garage with a door providing direct access into the property.

Springfield Road is a wide tree-lined street within easy walking distance of The American School in London and within close proximity to St John's Wood High Street and both Swiss Cottage and St John's Wood Underground Stations (Jubilee Line).

ACCOMMODATION AND AMENITIES

- Master bedroom suite comprising bedroom, dressing room and bathroom
- 5 Further bedrooms • 3 Further bathrooms (1 en suite) • Shower room
- Drawing room • Family room • Dining room • Kitchen/breakfast room
- Guest cloakroom • Utility room • Integral garage • Gated off-street parking
- Landscaped front and rear gardens • EPC rating – E

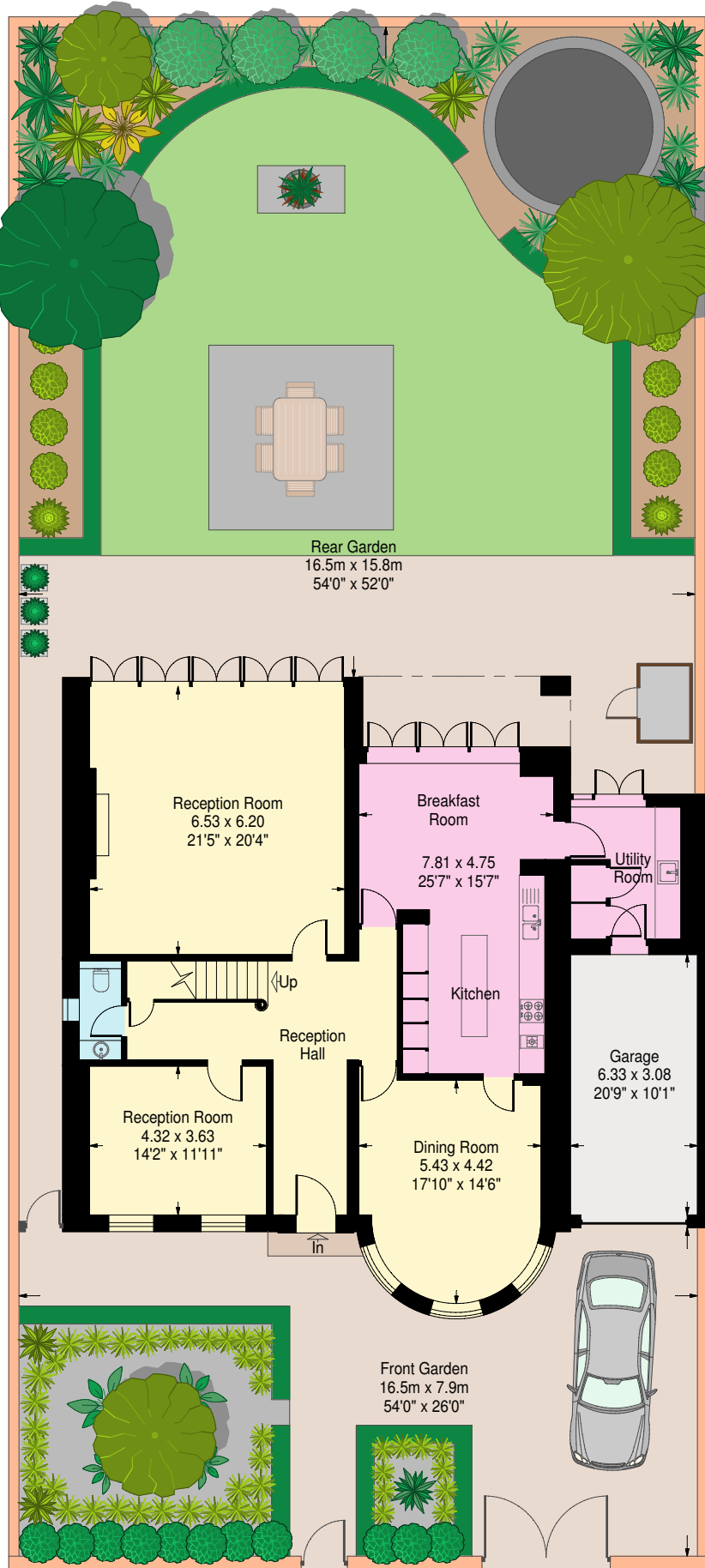


FREEHOLD • £7,250,000

JOINT SOLE AGENTS

AR
ARLINGTON
RESIDENTIAL

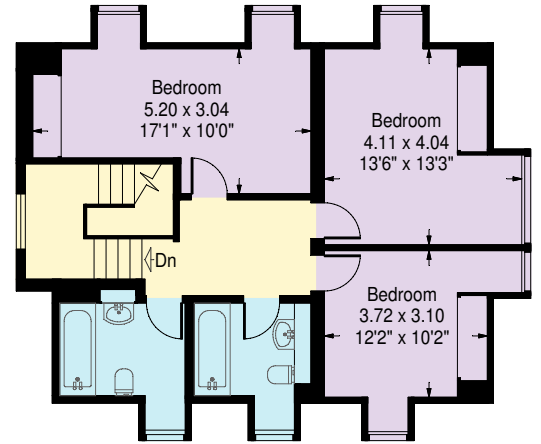
020 7722 3322
arlingtonresidential.com



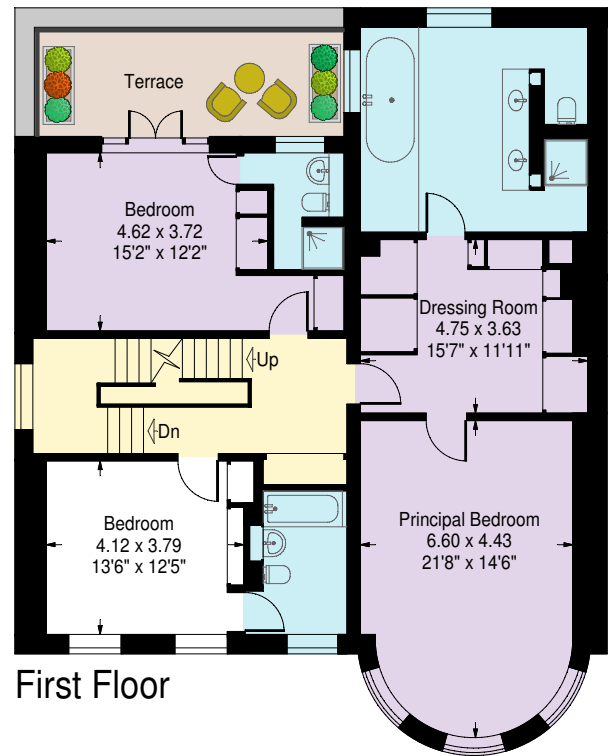
Ground Floor

Springfield Road, St John's Wood NW8

Approximate Gross Internal Area:
384.2 sq.m. / 4136 sq.ft.
(including garage)



Second Floor



First Floor

APPROX. SCALE
0 1 2 3 4 5 10Ft
0 1 2 3M

www.ProplanUK.co.uk

All measurements and figures are taken
in accordance with RICS guidelines.
This plan is for guidance only and must
not be relied upon as a statement of fact.